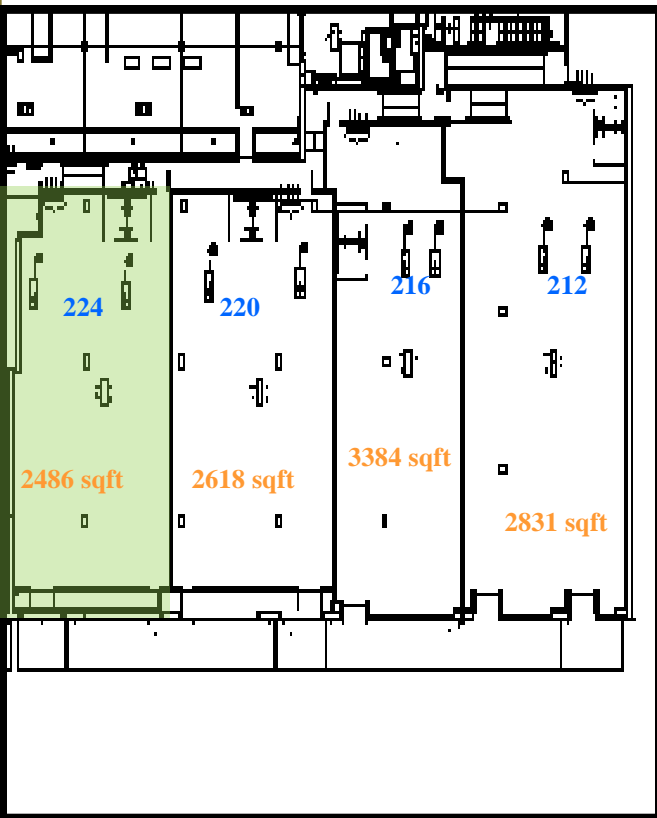


The Lyric – 230 Broadway East



Broadway E.

On Broadway . . .

224 Broadway East offers a highly sought after street level retail/office location only one-half block from the Capitol Hill Light Rail Station! This mixed use development sits below 234 residential apartments and is anchored by Bank of America, US Post Office, 8 to 8 Dental, Café Solstice, and Urban Animal Veterinary Clinic with a daily traffic count of almost 18,000 and 73 retail parking spots. 10 spaces shared with 8 to 8 Dental available for \$750/Mo.

- 2486 sq ft of Broadway retail space
- Rent = \$40 sq/ft/year
- NNN charges: \$8.21 sf/yr
- Parking: 73 total retail spaces
- One-half block to new Capitol Hill Light Rail Station and Street Car

Listed by:

- Elliot Jones – Broker

206 818 6821 cell

elliott@russelljonesrealestate.com