

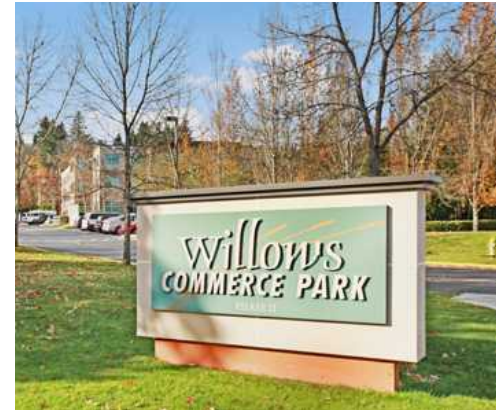
Willows
Commerce
Park II

Building A
9845 Willows Road NE
Redmond, Washington

FOR LEASE



Willows
Commerce Park II



FOR LEASE | UP TO 100,417 SF

Available Space

Floor	Size	Space Type
1	±42,715 SF	Office / Tech
1	±14,053 SF	Warehouse
2	±43,649 SF	Office
1-2	±100,417 SF Total	



Sweeping views of the Sammamish Valley and Willows Run Golf Course



Fire Creek Grill & Bar within walking distance; Redmond retail / amenities less than 2 miles away



High quality corporate campus environment with good access to Willows Road



3/1,000 SF parking ratio



10500 NE 8th Street, Suite 900
Bellevue, Washington 98004
broderickgroup.com

For more information, please contact:

Al Hodge
425.646.5240
hodge@broderickgroup.com

Paul Jerue
425.646.5223
jerue@broderickgroup.com

Chris Langer
425.646.5228
langer@broderickgroup.com

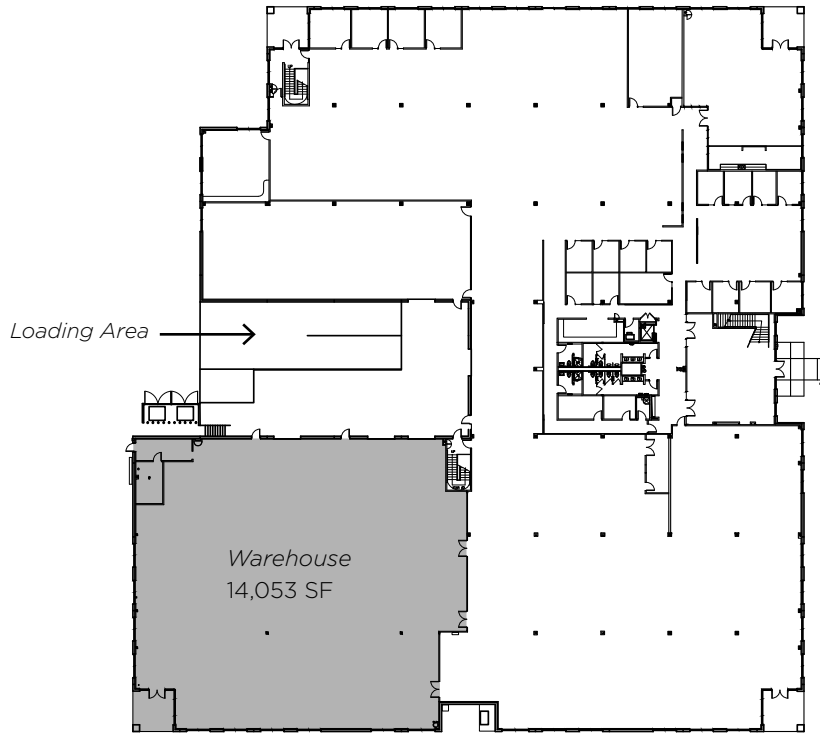


The information contained herein has been given to us by the owner or sources which we deem reliable. We have no reason to doubt its accuracy, but we do not guarantee it. Prospective tenants should carefully verify all information contained herein.

Willows
Commerce
Park II

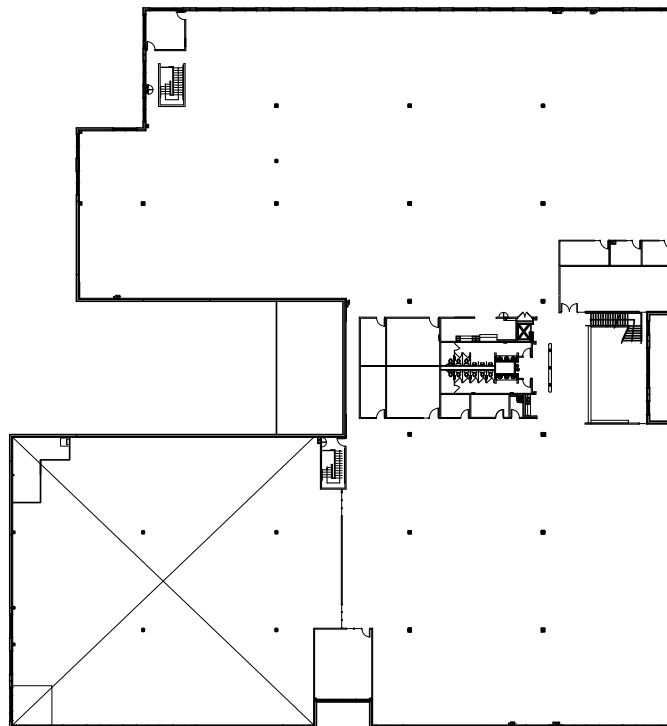
Building A
9845 Willows Road NE
Redmond, Washington

FOR LEASE



1st Floor *Office / Tech*
42,715 SF

1st Floor *Warehouse*
14,053 SF



2nd Floor *Office*
43,649 SF

1st Floor 56,768 SF

2nd Floor 43,649 SF

TOTAL 100,417 SF



10500 NE 8th Street, Suite 900
Bellevue, Washington 98004
broderickgroup.com

For more information, please contact:

Al Hodge
425.646.5240
hodge@broderickgroup.com

Paul Jerue
425.646.5223
jerue@broderickgroup.com

Chris Langer
425.646.5228
langer@broderickgroup.com

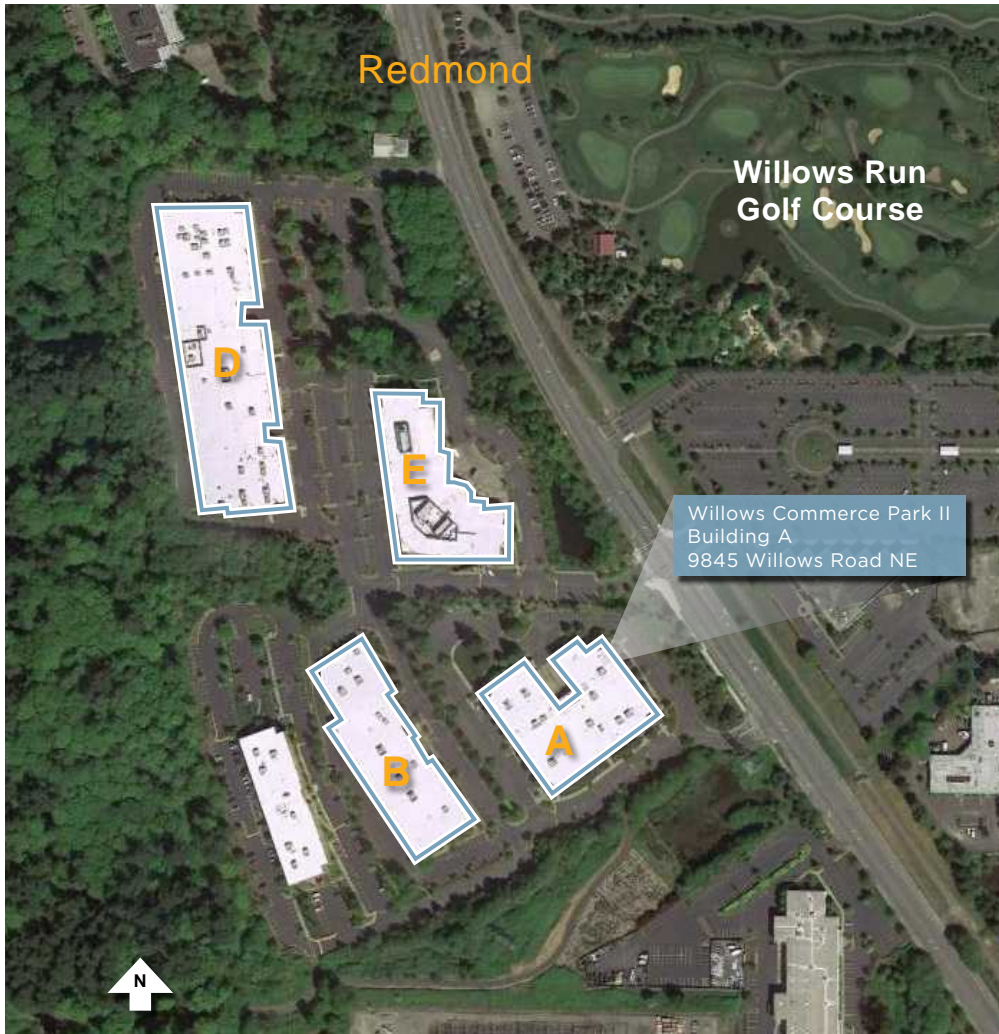


The information contained herein has been given to us by the owner or sources which we deem reliable. We have no reason to doubt its accuracy, but we do not guarantee it. Prospective tenants should carefully verify all information contained herein.

Willows
Commerce
Park II

Building A
9845 Willows Road NE
Redmond, Washington

FOR LEASE



Willows Commerce Park II

Willows Commerce Park II offers a distinctive, four-building campus totaling 415,000 square feet within 31 acres of landscaped grounds. Minutes from downtown Redmond, Willows Commerce Park II is exceptionally well located and easy to access off of Willows Road. Both high-profile corporate companies and small private businesses call Willows Commerce Park II home.



10500 NE 8th Street, Suite 900
Bellevue, Washington 98004
broderickgroup.com

For more information, please contact:

Al Hodge
425.646.5240
hodge@broderickgroup.com

Paul Jerue
425.646.5223
jerue@broderickgroup.com

Chris Langer
425.646.5228
langer@broderickgroup.com



The information contained herein has been given to us by the owner or sources which we deem reliable. We have no reason to doubt its accuracy, but we do not guarantee it. Prospective tenants should carefully verify all information contained herein.

AMENITIES MAP

