

Office For Lease



2510 N. Pines

21,829 SF of professional office space located conveniently north of I-90 on Pines Rd. On-site parking, signage.

Available Suites

Suite 4 1,951 SF

Open configuration, private restrooms, will build to suit

Suite 203 685 SF

~~Two Offices, Reception, Private Restroom~~

Suite 208 803 SF

~~2 Offices, Open Area Reception, will paint.~~

\$12.00 SF/YR Full Service

excluding janitorial, improvements negotiable



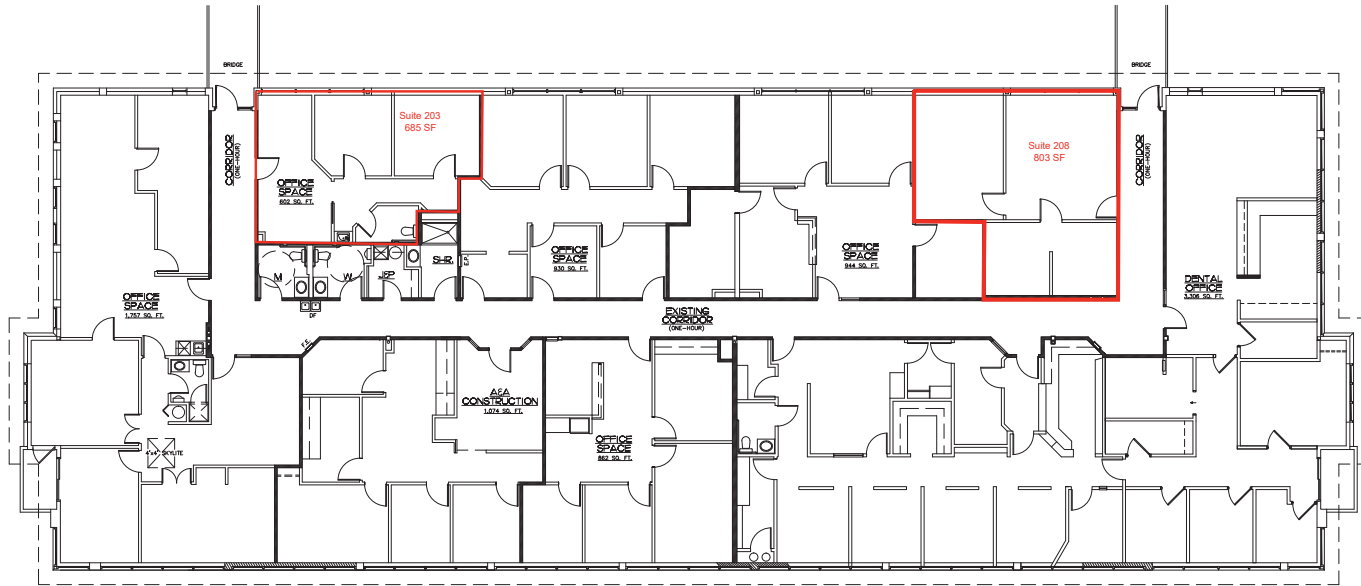
VIC OVERHOLSER

(509) 462-9310

vic@sdsrealty.com

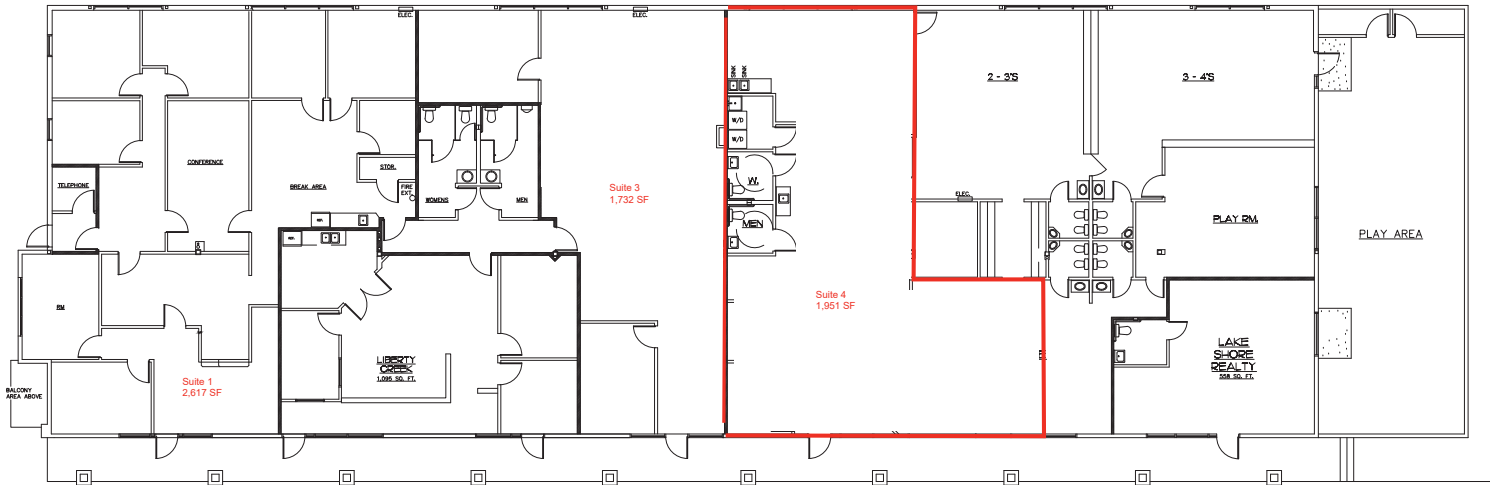
www.sdsrealty.com

This information has been secured from sources we believe to be reliable, but we make no representations or warranties, express or implied, as to the accuracy of the information. References to square footage or age are approximate. Buyer/tenant must verify the information and bears all risks for any inaccuracies.



1,278 sq. Rentable - 1,405 sq. Common
 1,294 sq.

2nd FLOOR PLAN
 SCALE: 1/8" = 1'-0"



8,898 sq. Rentable - 499 sq. Common
 9,290 sq.

1st FLOOR PLAN
 SCALE: 1/8" = 1'-0"

REVISIONS

WYATT ARCHITECTS AND ASSOCIATES
 PROJECT MANAGER
 LEE J. SCHWARTZBERG
 141719
 SPOKANE VALLEY, WASHINGTON 99216
 TEL: (509) 828-1600
 www.wyattarchitects.com

EXISTING PLAN FOR:
2510 NORTH PINES ROAD
 SPOKANE VALLEY, WA

SHEET TITLE:
FLOOR PLAN
 DRAWN BY:
 LJS
 PROJECT:
 2510PINES
 DATE:
 12/9/2011
 SHEET NO.

A20