

# Office For Lease



**2510 N. Pines**

**21,829 SF of  
professional  
office space located  
conveniently north of  
I-90 on Pines Rd.  
On-site parking,  
signage.**

## Available Suites

### **Suite 1 2,712 SF**

4-7 Privates, conference, reception, kitchenette, work area.

### **Suite 4 1,951 SF**

Open configuration, private restrooms, will build to suit.

### **Suite 207 1,074 SF**

Three offices, work room, reception.

### **Dental Suite 3,762 SF**

Partially equipped dental suite. Will remodel for normal office use. See flyer below.

**\$12.00 SF/YR Full Service**

*excluding janitorial, improvements negotiable*



**VIC OVERHOLSER**

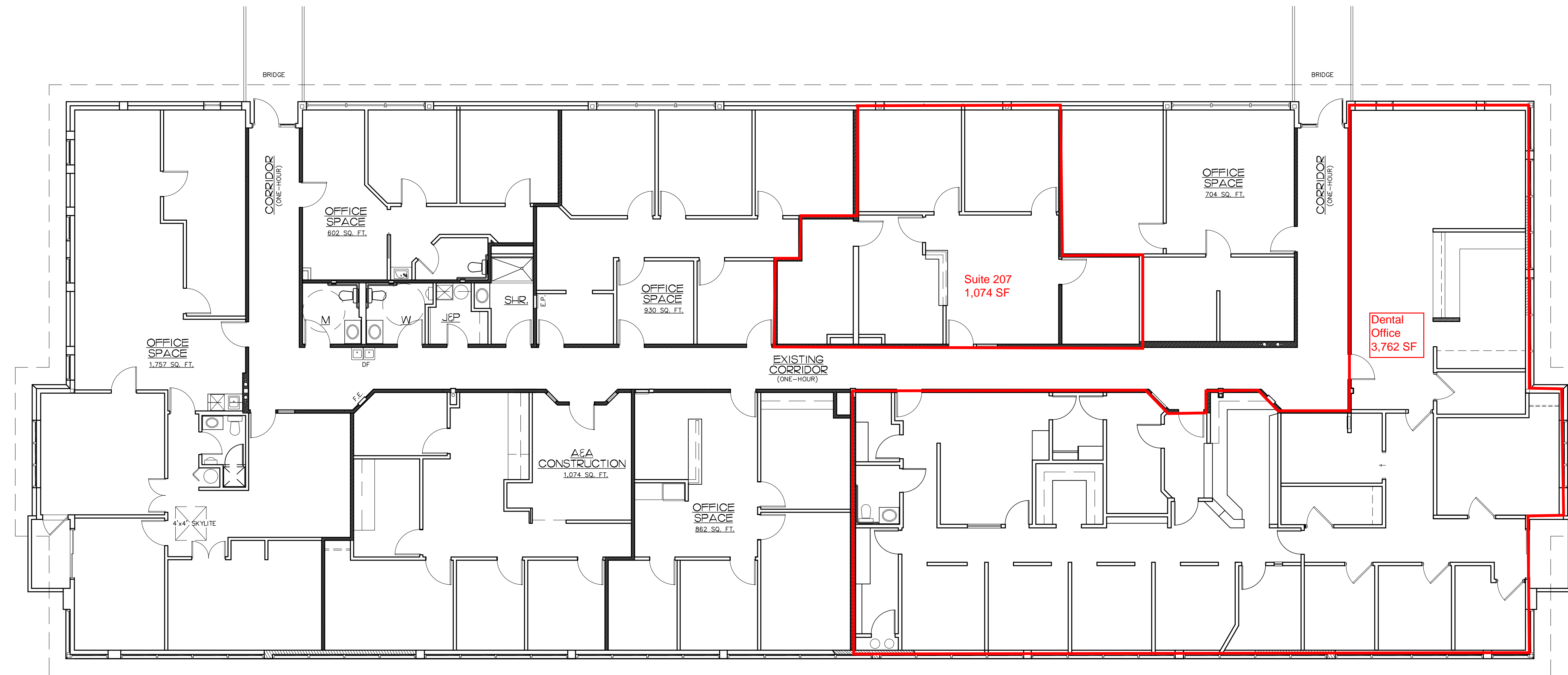
**(509) 462-9310**

[vic@sdsrealty.com](mailto:vic@sdsrealty.com)

[www.sdsrealty.com](http://www.sdsrealty.com)

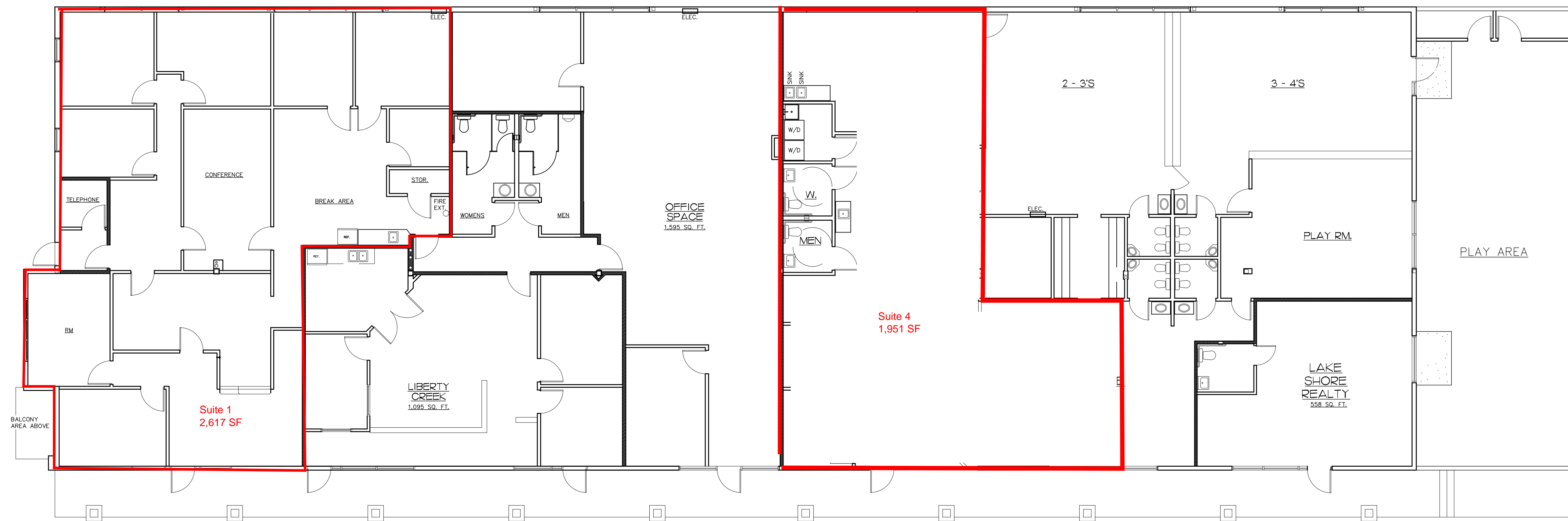


This information has been secured from sources we believe to be reliable, but we make no representations or warranties, express or implied, as to the accuracy of the information. References to square footage or age are approximate. Buyer/tenant must verify the information and bears all risks for any inaccuracies.



10,179 sq. ft. Rentable - 1,405 sq. ft. Commons  
11,584 sq. ft.

2nd FLOOR PLAN  
SCALE: 1/8" = 1'-0"



9,856 sq. ft. Rentable - 439 sq. ft. Commons  
10,295 sq. ft.

1st FLOOR PLAN  
SCALE: 1/8" = 1'-0"

REVISIONS  
--

**WYATT ARCHITECTS AND ASSOCIATES**  
PROJECT MANAGER: LEE J. SCHWARTZENBURG  
lee@wyattarchitects.com

PO BOX 141713  
SPOKANE VALLEY, WASHINGTON 99214  
TEL: (509) 928-1860

EXISTING PLAN FOR:  
**2510 NORTH PINES ROAD**  
SPOKANE VALLEY, WA

SHEET TITLE:  
FLOOR PLAN

DRAWN BY:  
LJS

PROJECT:  
2510 PINES

DATE:  
12/9/2011

SHEET NO.  
A2.0