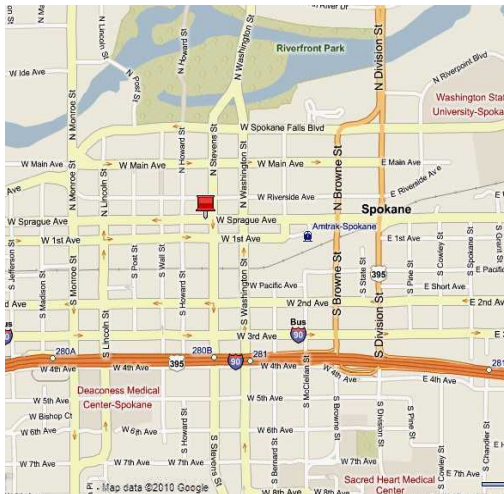


# Upscale Office Suites Available Downtown The Fernwell Building 505 W. Riverside, Spokane, Washington



## Available Space

Suite 210: 2,031 SF ±

Suite 605: 1,656 SF ±

Suite 630: 1,845 SF ±

(Suites 605 & 630 can be combine for a total of 3,501 SF±)

LEASE RATE: \$16/SF FS

- Located in the Heart of Spokane's Central Business District (CBD)
- Energy Efficient Building Systems
  - Implementing Green & Sustainable Management Practices
- Connectivity:
  - Plug & Go With In-House ISP
  - Fiber (XO, 180, Qwest & TW Telecom)
  - Comcast
  - Wireless (Terabyte Triangle)
- Full-Time, On-Site Staff
- Storage Available
- Victorian Era Architecture
- 6 Story Atrium With Central Skylight
- Ample Parking Within a 2 Block Radius

## Contact Information:

Jon Jeffreys, SIOR

509 622 3566

[jjeffreys@naiblack.com](mailto:jjeffreys@naiblack.com)

Black Commercial, Inc.  
107 S. Howard, Suite 500  
Spokane, WA 99201  
direct 509 623 1000  
fax 509 622 3500  
[www.naiblack.com](http://www.naiblack.com)



The information contained herein has been given to us by the owner of the property or other sources we deem reliable. We have no reason to doubt its accuracy, but we do not guarantee it. All information should be verified prior to purchase or lease.



Upscale Finish  
and  
Custom Design

Traffic Counts  
Riverside:  
6,700 ADT  
Stevens:  
12,600 ADT

Building Accommodates  
Technology Companies,  
Attorneys, Design Firms,  
Engineers, Financial  
Companies, Restaurants,  
Cafés, Bakeries,  
Bookstores, Retail Sales &  
Boasts an Entire Floor of  
Executive Suites.

Contact Information:

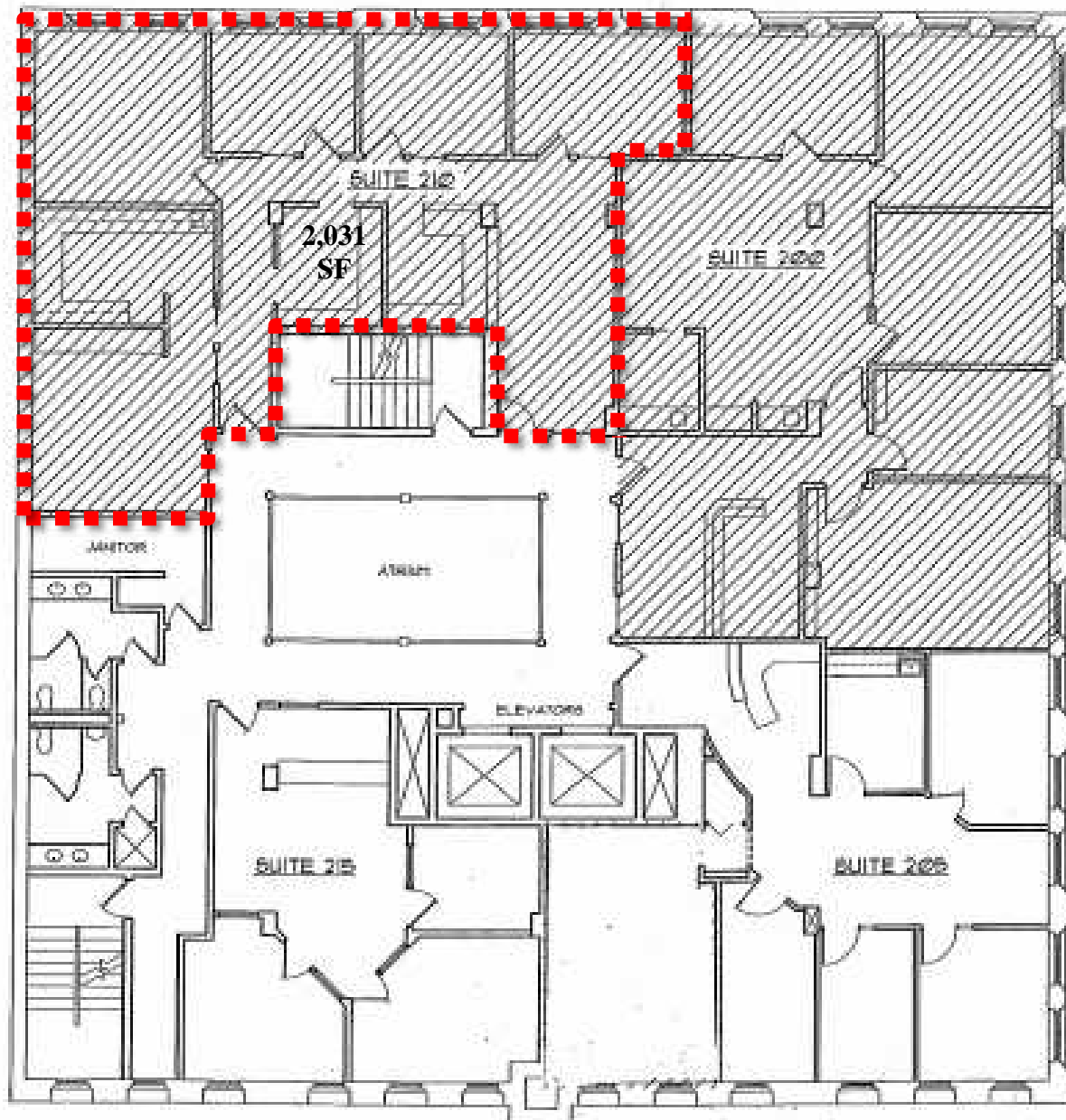
Jon Jeffreys, SIOR  
509 622 3566  
jjeffreys@naiblack.com



Black Commercial, Inc.  
107 S. Howard, Suite 500  
Spokane, WA 99201  
direct 509 623 1000  
fax 509 622 3500  
www.naiblack.com

The information contained herein has been given to us by the owner of the property or other sources we deem reliable. We have no reason to doubt its accuracy, but we do not guarantee it. All information should be verified prior to purchase or lease.

RIVERSIDE AVENUE

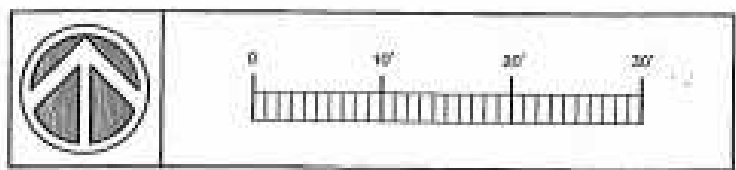


STEVENSON STREET

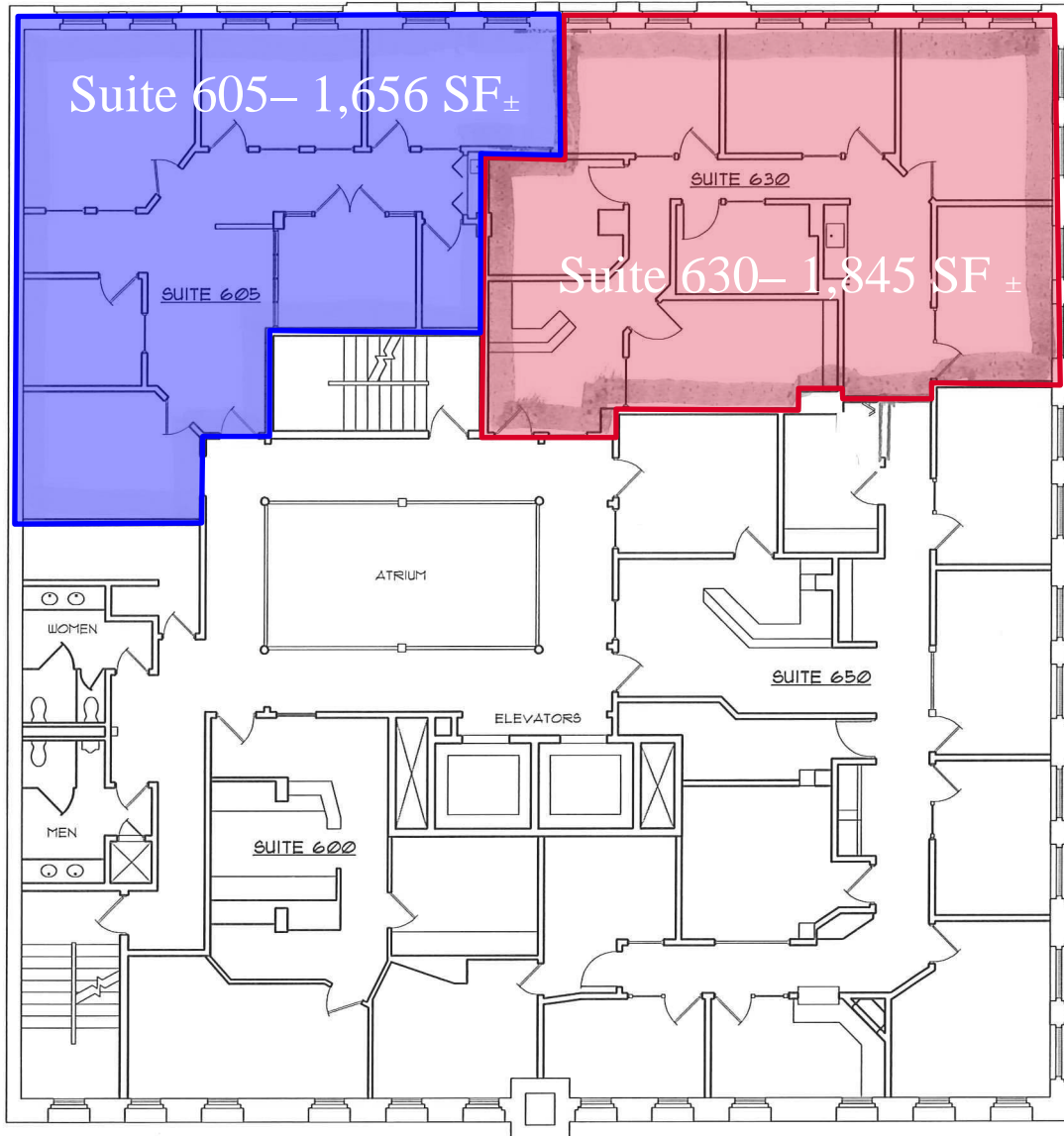
**SECOND FLOOR -**

AVAILABLE SPACE

Suite 210: 2,031 SF ±



RIVERSIDE AVENUE



STEVENS STREET

SIXTH FLOOR

Suite 605: 1,656 SF ±

Suite 630: 1,845 SF ±

(Suites 605 & 630 can be combine for a total of 3,501 SF±)

