

PUYALLUP EXECUTIVE PARK (929)

929 E Main, Puyallup, WA 98372



SUMMARY INFORMATION

Available SF:	524 - 1,301 SF
Lease Rate:	\$18.00 SF/yr (NNN)
Lot Size:	1.55 Acres
Year Built:	2001
Building Size:	27,346
Zoning:	CG

PROPERTY OVERVIEW

Class A office building in downtown Puyallup. Quality constructed building offers many amenities, including locker room and showers, immediate occupancy and on-site property management

PROPERTY HIGHLIGHTS

- 2 Elevators
- On Site Cafe
- Riverwalk Trail Access
- Easy Access to freeways
- Beautiful Views of Mt. Rainier and the River
- Outside deck access from some suites
- NNN include janitorial

KELLER WILLIAMS COMMERCIAL
1011 East Main,
Suite 208
Puyallup, WA 98372

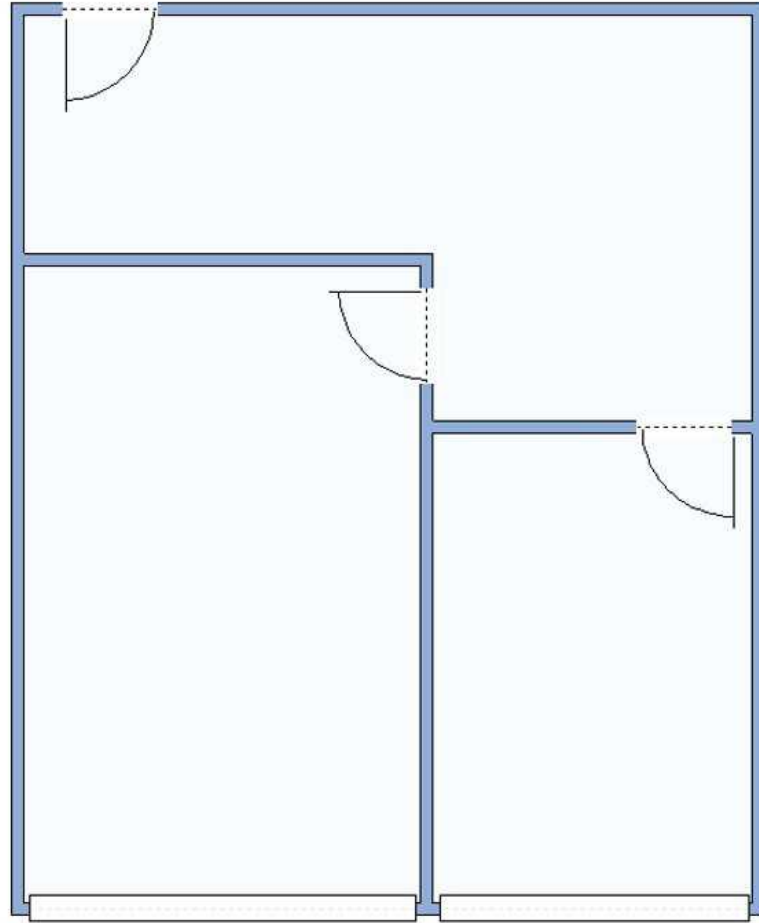
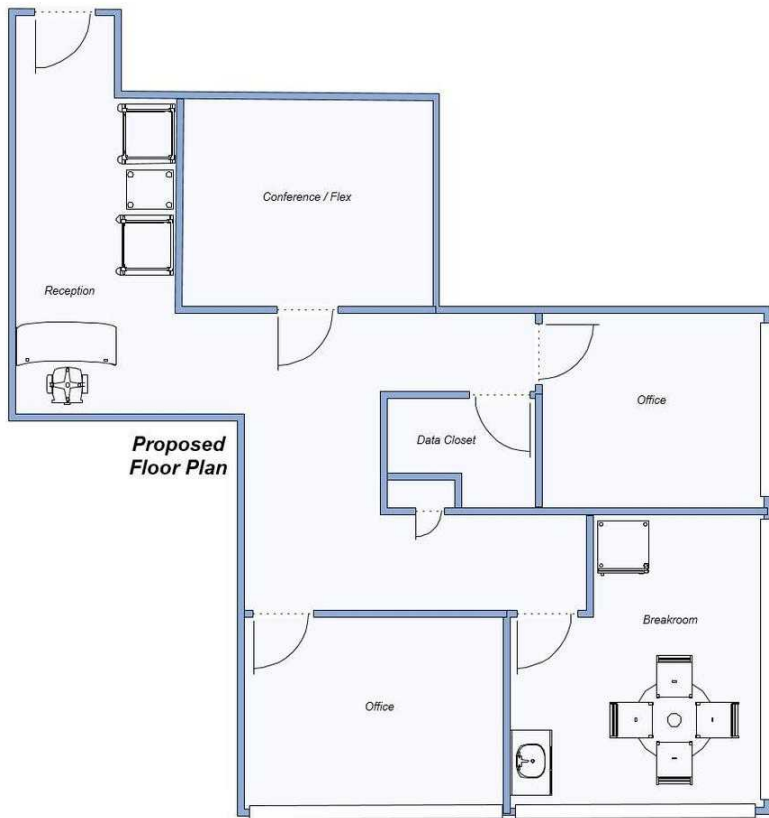
JONATHAN HARPER
Director Of Sales And Leasing
253.840.5574
jonathanharper@kw.com
WA #90048

RICK BROWN
Commercial Broker
253.840.5574
rickbrown@kw.com

We obtained the information above from sources we believe to be reliable. However, we have not verified its accuracy and make no guarantee, warranty or representation about it. It is submitted subject to the possibility of errors, omissions, change of price, rental or other conditions, prior sale, lease or financing, or withdrawal without notice. We include projections, opinions, assumptions or estimates for example only, and they may not represent current or future performance of the property. You and your tax and legal advisors should conduct your own investigation of the property and transaction.

PUYALLUP EXECUTIVE PARK (929)

929 E Main, Puyallup, WA 98372



1 SUITE 210
1,301 SF : 2nd Floor

2 SUITE 320
524 SF : 3rd Floor

KELLER WILLIAMS COMMERCIAL
1011 East Main,
Suite 208
Puyallup, WA 98372

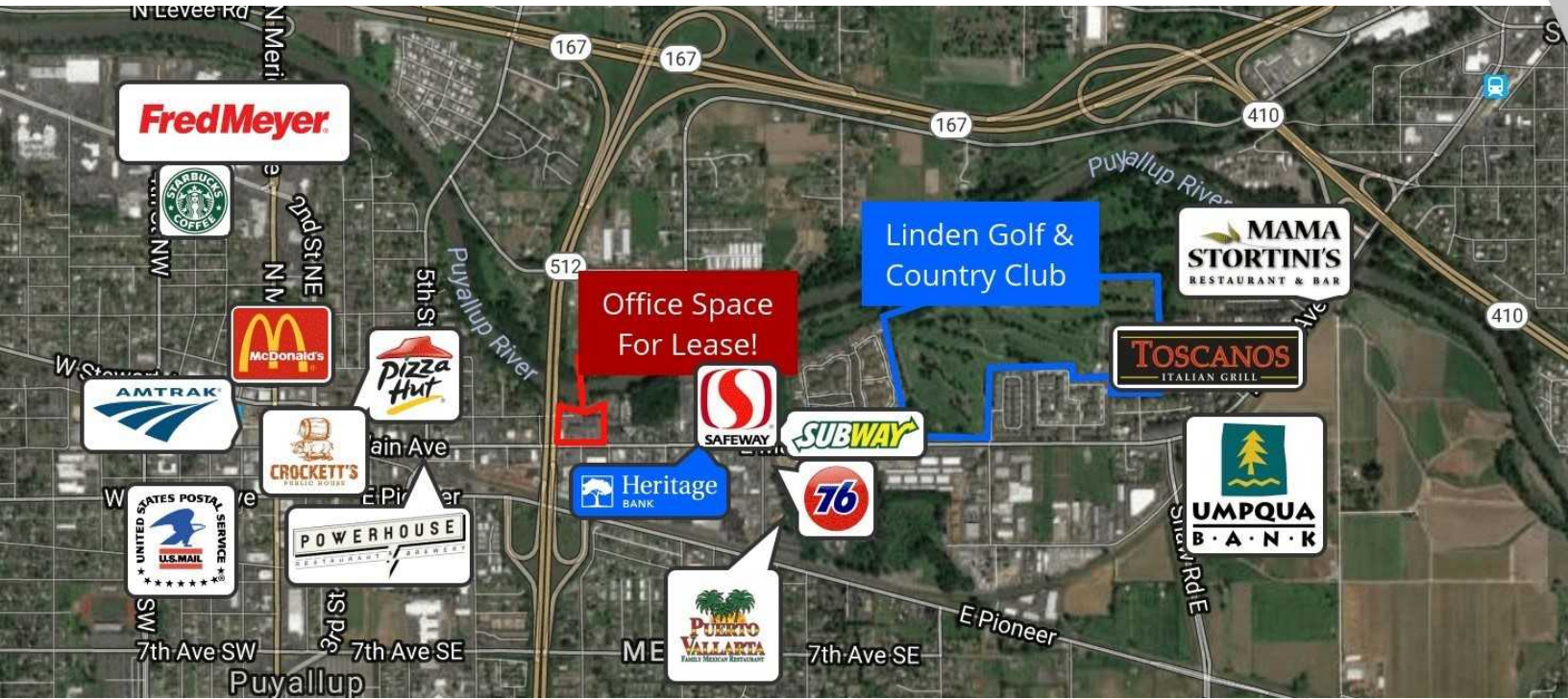
JONATHAN HARPER
Director Of Sales And Leasing
253.840.5574
jonathanharper@kw.com
WA #90048

RICK BROWN
Commercial Broker
253.840.5574
rickbrown@kw.com

We obtained the information above from sources we believe to be reliable. However, we have not verified its accuracy and make no guarantee, warranty or representation about it. It is submitted subject to the possibility of errors, omissions, change of price, rental or other conditions, prior sale, lease or financing, or withdrawal without notice. We include projections, opinions, assumptions or estimates for example only, and they may not represent current or future performance of the property. You and your tax and legal advisors should conduct your own investigation of the property and transaction.

PUYALLUP EXECUTIVE PARK (929)

929 E Main, Puyallup, WA 98372



LEASE INFORMATION

Lease Type:	NNN	Lease Term:	36 to 60 months
Total Space:	524 - 1,301 SF	Lease Rate:	\$18.00 SF/yr

AVAILABLE SPACES

SUITE	SIZE (SF)	LEASE TYPE	LEASE RATE	DESCRIPTION
Suite 210	1,301 SF	NNN	\$18.00 SF/yr	Reception area, plenty of room for cubicles or bullpen, up to 3 offices. Corner suite provides lots of light and views of Mt. Rainier.
Suite 320	524 SF	NNN	\$18.00 SF/yr	1 - 2 person office located on the 3rd floor just around the corner from the elevator and the stairs. Beautiful views of the river.

KELLER WILLIAMS COMMERCIAL
 1011 East Main,
 Suite 208
 Puyallup, WA 98372

JONATHAN HARPER
 Director Of Sales And Leasing
 253.840.5574
 jonathanharper@kw.com
 WA #90048

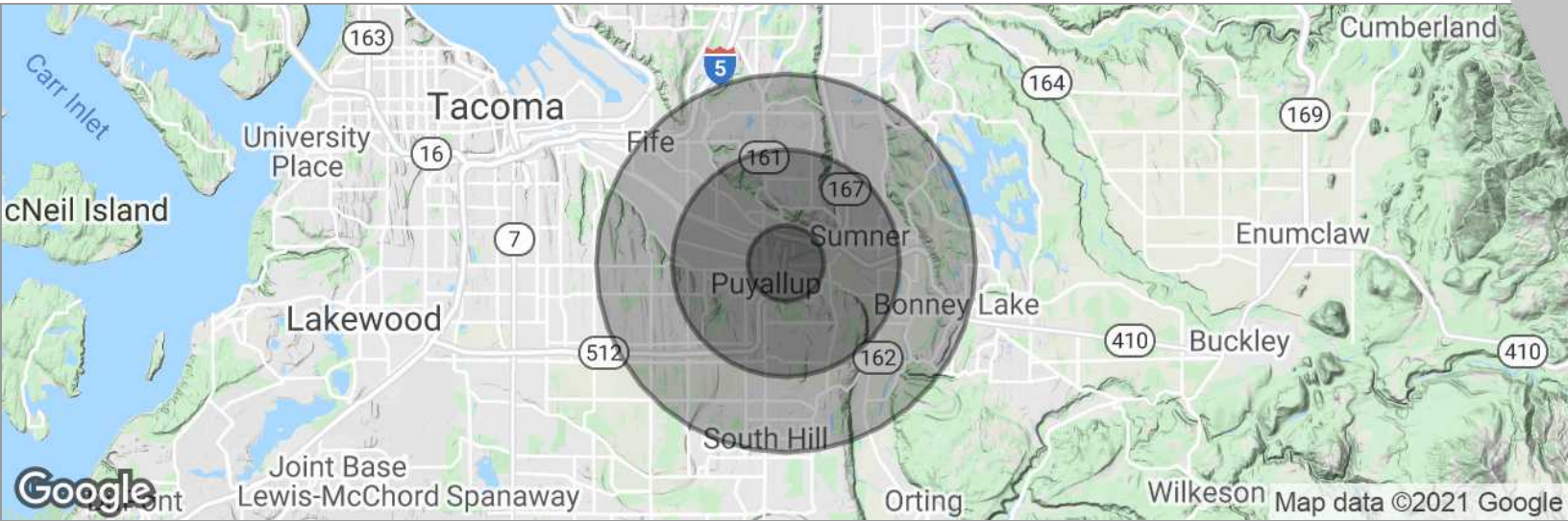
RICK BROWN
 Commercial Broker
 253.840.5574
 rickbrown@kw.com

We obtained the information above from sources we believe to be reliable. However, we have not verified its accuracy and make no guarantee, warranty or representation about it. It is submitted subject to the possibility of errors, omissions, change of price, rental or other conditions, prior sale, lease or financing, or withdrawal without notice. We include projections, opinions, assumptions or estimates for example only, and they may not represent current or future performance of the property. You and your tax and legal advisors should conduct your own investigation of the property and transaction.



PUYALLUP EXECUTIVE PARK (929)

929 E Main, Puyallup, WA 98372



POPULATION	1 MILE	3 MILES	5 MILES
Total population	7,461	62,934	152,550
Median age	35.8	36.4	36.2
Median age (male)	34.3	35.3	35.5
Median age (Female)	37.2	37.3	36.7
HOUSEHOLDS & INCOME	1 MILE	3 MILES	5 MILES
Total households	3,128	24,917	60,092
# of persons per HH	2.4	2.5	2.5
Average HH income	\$60,891	\$70,674	\$71,786
Average house value	\$237,636	\$332,611	\$331,181

* Demographic data derived from 2010 US Census

KELLER WILLIAMS COMMERCIAL
 1011 East Main,
 Suite 208
 Puyallup, WA 98372

JONATHAN HARPER
 Director Of Sales And Leasing
 253.840.5574
 jonathanharper@kw.com
 WA #90048

RICK BROWN
 Commercial Broker
 253.840.5574
 rickbrown@kw.com

We obtained the information above from sources we believe to be reliable. However, we have not verified its accuracy and make no guarantee, warranty or representation about it. It is submitted subject to the possibility of errors, omissions, change of price, rental or other conditions, prior sale, lease or financing, or withdrawal without notice. We include projections, opinions, assumptions or estimates for example only, and they may not represent current or future performance of the property. You and your tax and legal advisors should conduct your own investigation of the property and transaction.