

FOR LEASE

The AGC Building

1200 Westlake Avenue North, Seattle, WA



- ◆ Great views of Lake Union and Downtown Seattle
- ◆ Private office build out
- ◆ Lobby exposure
- ◆ High-end Lake Union image
- ◆ Abundant natural light
- ◆ Well known, local ownership
- ◆ Waterfront access and moorage available
- ◆ Walking distance to South Lake Union eateries and amenities
- ◆ Convenient access to I-5, Highway 99 and mass transit, along with on-site parking
- ◆ Bike rack and showers
- ◆ On-site conference facilities for large meetings
- ◆ Newly renovated common areas

**Newmark
Knight Frank**

For further information, please contact our exclusive agent:

Cavan O'Keefe 206.395.2903 cavan.okeefe@ngkf.com

Licensed Washington Real Estate Brokers

www.ngkf.com

Procuring broker shall only be entitled to a commission, calculated in accordance with the rates approved by our principal only if such procuring broker executes a brokerage agreement acceptable to us and our principal and the conditions as set forth in the brokerage agreement are fully and unconditionally satisfied. Although all information furnished regarding property for sale, rental, or financing is from sources deemed reliable, such information has not been verified and no express representation is made nor is any to be implied as to the accuracy thereof and it is submitted subject to errors, omissions, change of price, rental or other conditions, prior sale, lease or financing, or withdrawal without notice and to any special conditions imposed by our principal.

FOR LEASE

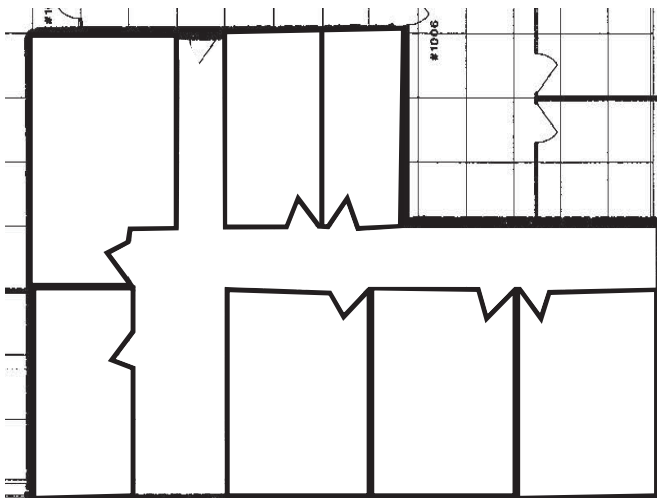
The AGC Building

1200 Westlake Avenue North, Seattle, WA



FLOOR PLAN

FLOOR 10 | ± 2,347 SF



CURRENT AVAILABILITIES

SPACE	SIZE	AVAILABILITY
-------	------	--------------

1200 Westlake Avenue North

10th Floor	± 2,347 SF	Available Now
------------	------------	---------------

RETAIL SPACE	SIZE	AVAILABILITY
--------------	------	--------------

1st Floor Restaurant Dock Level	4,523 SF	Available Now
---------------------------------	----------	---------------

2nd Floor Office/Retail Building Lobby (Divisible to 1,690 SF)	3,555 SF	Available Now
--	----------	---------------

**Newmark
Knight Frank**

For further information, please contact our exclusive agent:
Cavan O'Keefe 206.395.2903 cavan.okeefe@ngkf.com
Licensed Washington Real Estate Brokers