

# Dental Office For Lease



**2510 N. Pines**

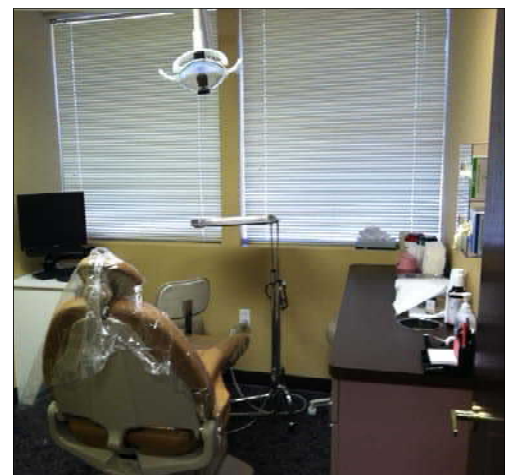
**3,762 SF**  
**Dental Office**  
**Most Equipment**  
**in place for**  
**Turn-key operation**



## Office Amenities

**Large Waiting Area**  
**Reception w/record storage**  
**1 large private office**  
**8 exam rooms w/sinks**  
**X-ray room**  
**2 lab areas with counter/sink**  
**Operator Room**  
**Inter-office Nurse Station**  
**Storage**  
**In-suite restroom**

***\$15.00 SF/YR***  
***Full Service, less janitor.***



**VIC OVERHOLSER**

**509 462-9310**

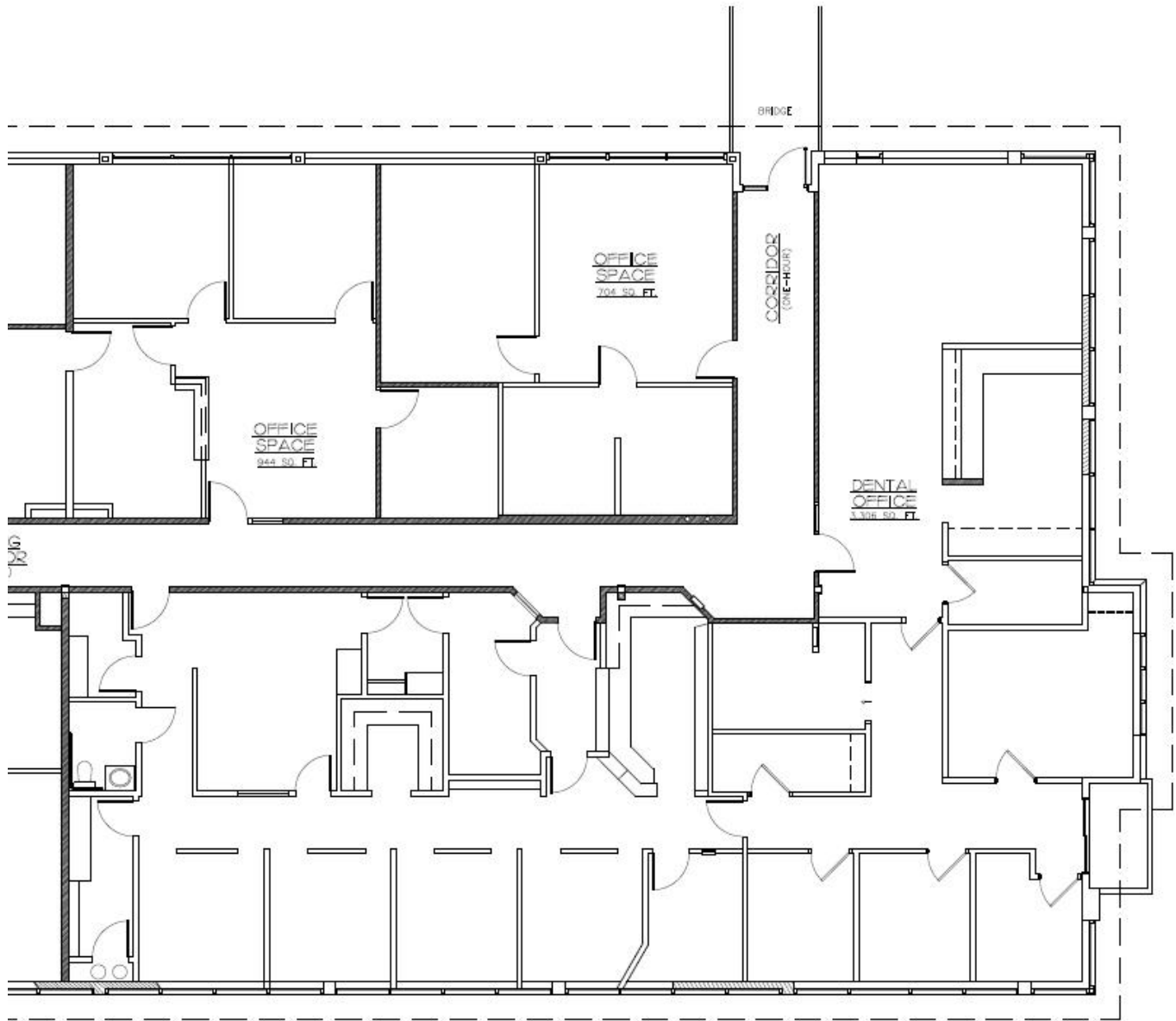
[vic@sdsrealty.com](mailto:vic@sdsrealty.com)

[www.sdsrealty.com](http://www.sdsrealty.com)

**SDS REALTY Inc.**  
COMMERCIAL REAL ESTATE SERVICES

This information has been secured from sources we believe to be reliable, but we make no representations or warranties, express or implied, as to the accuracy of the information. References to square footage or age are approximate. Buyer/tenant must verify the information and bears all risks for any inaccuracies.

# Dental Office Floor Plan



2nd FLOOR PLAN

SCALE: 1/8" = 1'-0"



VIC OVERHOLSER

462-9310

[vic@sdsrealty.com](mailto:vic@sdsrealty.com)

[www.sdsrealty.com](http://www.sdsrealty.com)

This information has been secured from sources we believe to be reliable, but we make no representations or warranties, express or implied, as to the accuracy of the information. References to square footage or age are approximate. Buyer/tenant must verify the information and bears all risks for any inaccuracies.