

# Retail For Lease



**23801 E. Appleway**

*In the path of the  
Village at Stonehill's  
100 acre development.  
7,340 cars/day*

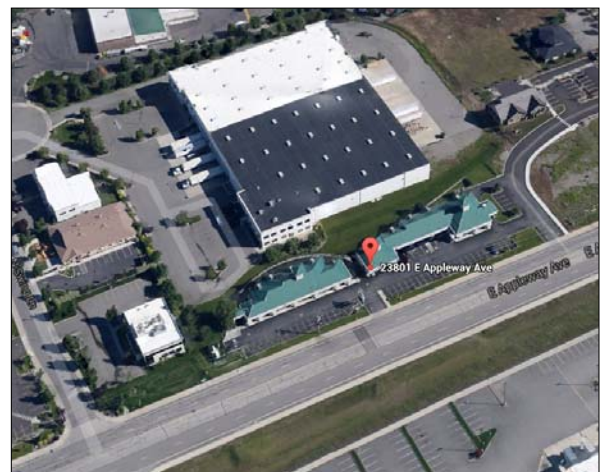
## Property Information

*Affordable, Quality Retail in Liberty Lake.  
4.3/1000 Parking. Main Tenants: San Francisco Sourdough,  
Medicine Man Pharmacy, Caribbean Heat Tanning Salon.  
Pylon and Building Signage.*

**Suite 130 1,200 SF**

**Two offices, open area, restroom.**

**\$17.00 SF/YR + Electric/Taxes**  
**Electric Direct/Taxes (\$1.11 psf) est.**



**VIC OVERHOLSER**

**462-9310**

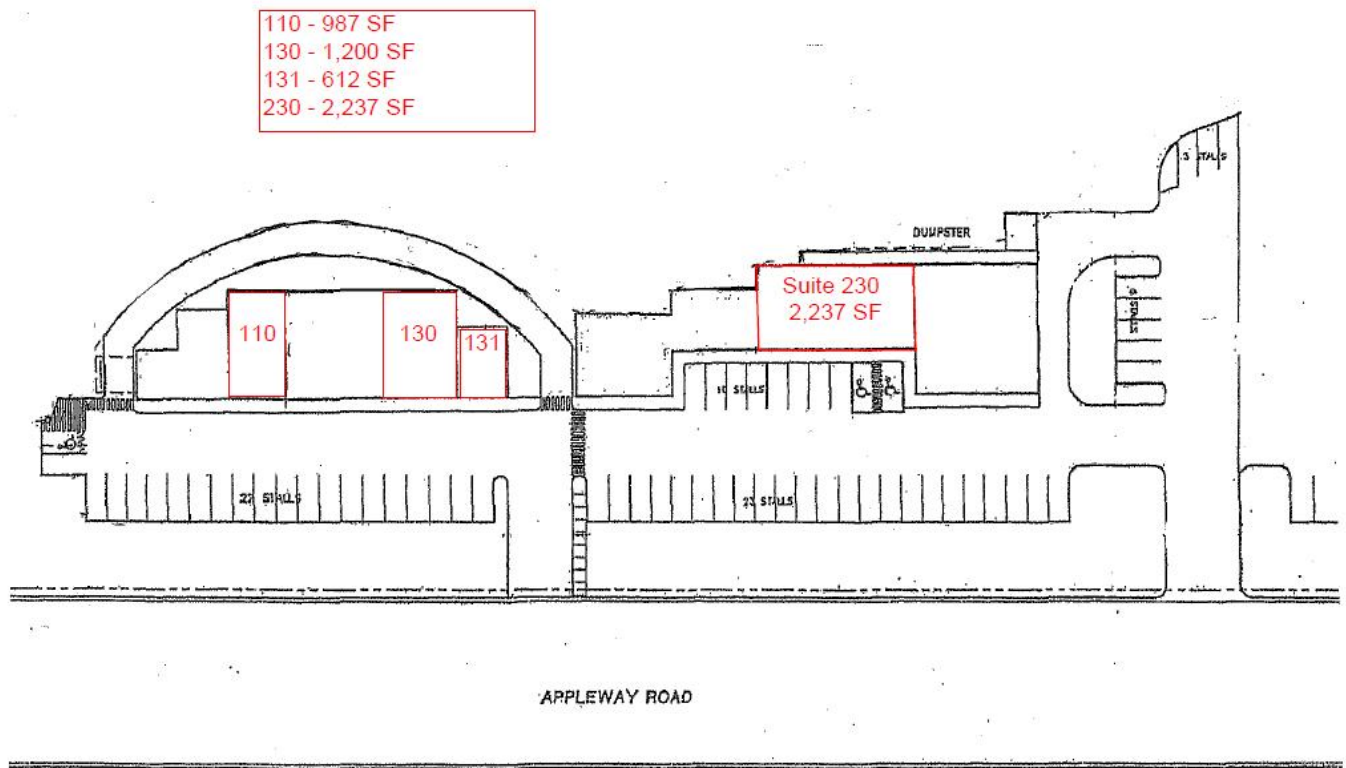
[vic@sdsrealty.com](mailto:vic@sdsrealty.com)

[www.sdsrealty.com](http://www.sdsrealty.com)



This information has been secured from sources we believe to be reliable, but we make no representations or warranties, express or implied, as to the accuracy of the information. References to square footage or age are approximate. Buyer/tenant must verify the information and bears all risks for any inaccuracies.

# Retail For Lease



VIC OVERHOLSER

462-9310

[vic@sdsrealty.com](mailto:vic@sdsrealty.com)

[www.sdsrealty.com](http://www.sdsrealty.com)

This information has been secured from sources we believe to be reliable, but we make no representations or warranties, express or implied, as to the accuracy of the information. References to square footage or age are approximate. Buyer/tenant must verify the information and bears all risks for any inaccuracies.