



Come be a part of Spokane's developing district! This building offers classic, old world feeling with modern touches. Unique eateries and shopping boutiques nearby.

AVAILABLE 2017

- ◆ MAIN FLOOR 3,390 SF +/-
- ◆ 2ND FLOOR 2,640 SF +/-

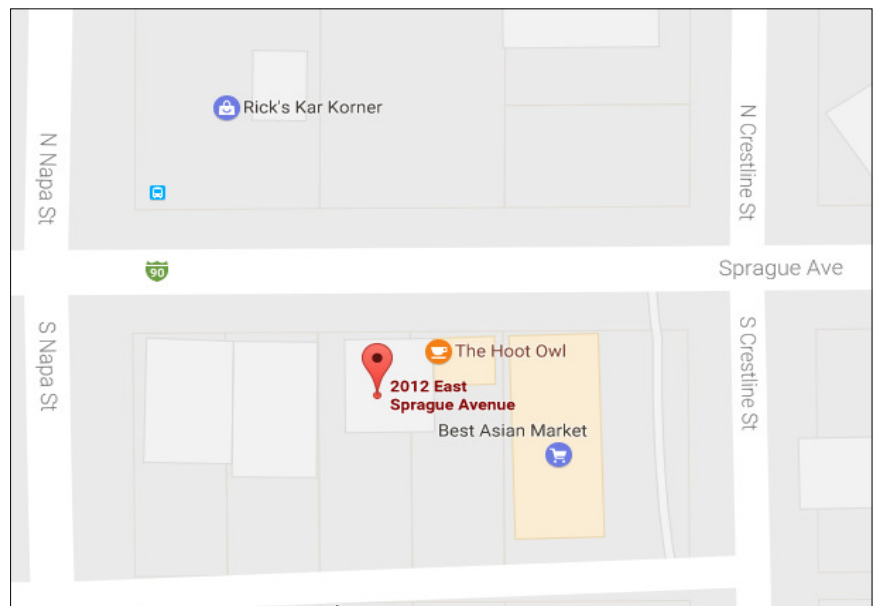
RATE

- ◆ \$8-12 SQFT NNN
- SUBJECT TO BUILD OUT COSTS

FOR LEASE

SPOKANE, WA

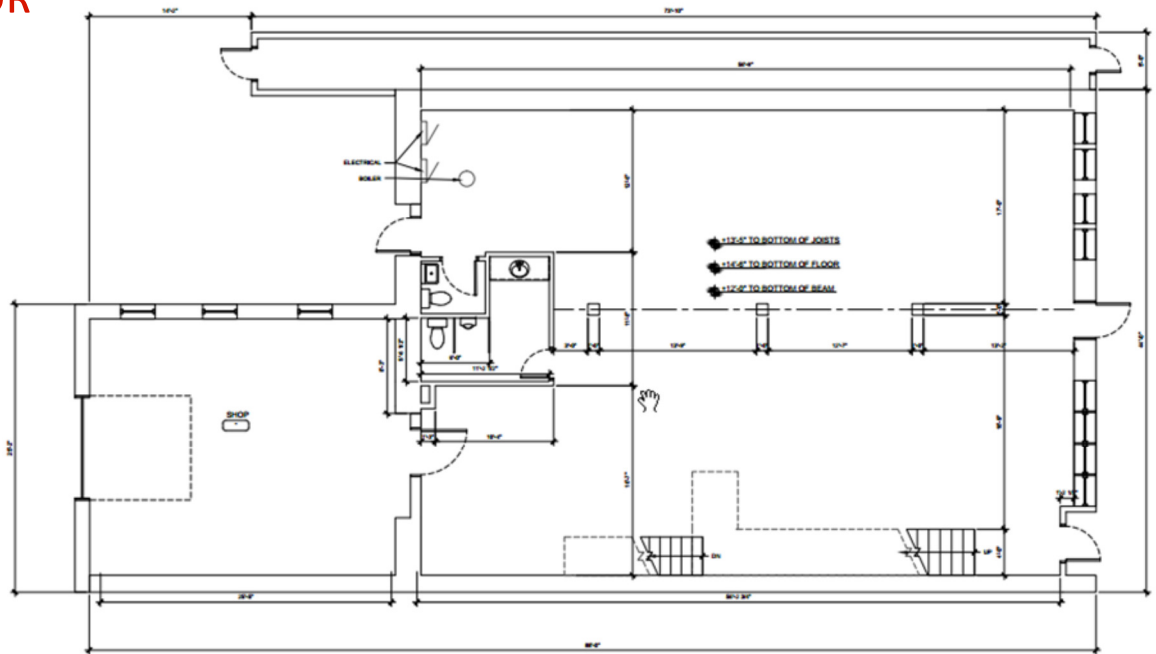
- ◆ OFF-STREET PARKING
- ◆ OPEN FLOORPLAN
- ◆ HIGH CEILINGS
- ◆ EXPOSED BRICK WALLS



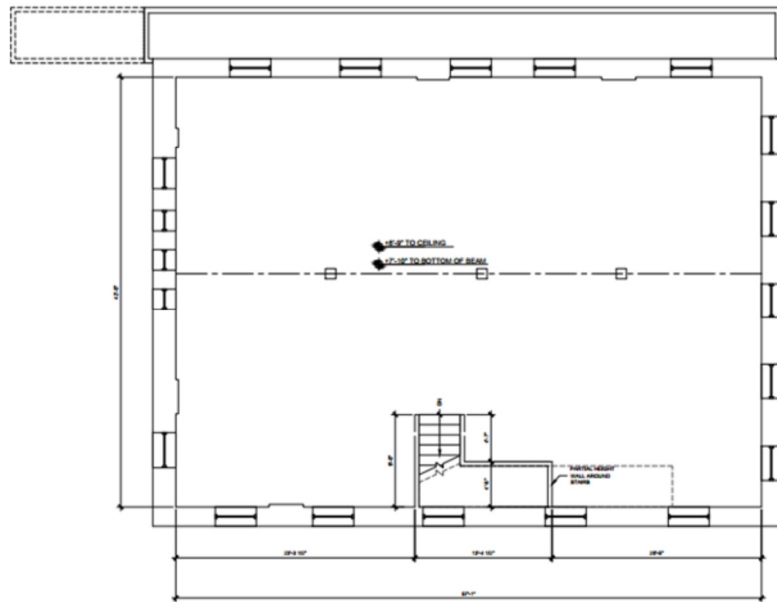
CARLOS HERRERA
carlos@sdsrealty.com
O: 509.714.2593

STEVE SCHMAUTZ
steve@sdsrealty.com
O: 509.462.9305
C: 509.939.6260

MAIN FLOOR
3,390 SF +/-



SECOND FLOOR
2,640 SF +/-



CARLOS HERRERA
carlos@sdsrealty.com
O: 509.714.2593

STEVE SCHMAUTZ
steve@sdsrealty.com
O: 509.462.9305
C: 509.939.6260