



FOR LEASE

Three Tree Medical Arts Building

16259 SYLVESTER ROAD SW, BURIEN, WA



On Virginia Mason Franciscan
Health's St. Anne Hospital campus

BRIAN CLAPP
206.248.7316
brian.clapp@kidder.com

KEITH HONSBERGER
425.450.1107
keith.honsberger@kidder.com

SPENCER CLAPP
206.248.7427
spencer.clapp@kidder.com

**Kidder
Mathews**

Building owned and managed by
HEALTHCARE REALTY

This information supplied herein is from sources we deem reliable. It is provided without any representation, warranty, or guarantee, expressed or implied as to its accuracy. Prospective Buyer or Tenant should conduct an independent investigation and verification of all matters deemed to be material, including, but not limited to, statements of income and expenses. Consult your attorney, accountant, or other professional advisor.

KIDDER.COM

FOR LEASE

Three Tree Medical Arts Building

16259 SYLVESTER ROAD SW, BURIEN, WA



DIRECT

INTERNAL BUILDING ACCESS
TO ST. ANNE HOSPITAL

QUALITY

MEDICAL BUILD-OUT

ABUNDANT

SURFACE & GARAGE PARKING

AVAILABLE

SPACES FROM
797 RSF TO 9,691 RSF

ON CAMPUS

AT VIRGINIA MASON FRANCISCAN
HEALTH'S ST. ANNE HOSPITAL

EASY ACCESS

FROM SR-518, SR-509, I-405, & I-5

KIDDER.COM

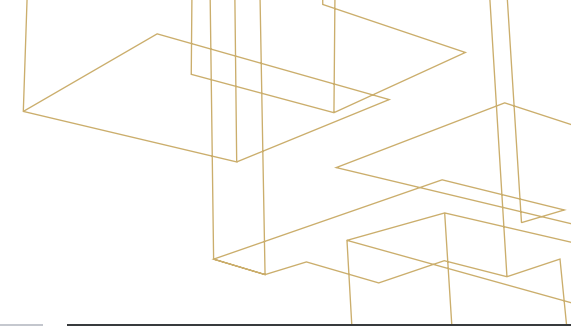
This information supplied herein is from sources we deem reliable. It is provided without any representation, warranty, or guarantee, expressed or implied as to its accuracy. Prospective Buyer or Tenant should conduct an independent investigation and verification of all matters deemed to be material, including, but not limited to, statements of income and expenses. Consult your attorney, accountant, or other professional advisor.

km Kidder
Mathews

FOR LEASE

Three Tree Medical Arts Building

16259 SYLVESTER ROAD SW, BURIEN, WA



3,194 RSF

SUITE 302
(AVAILABLE 12/1/21)

4,382 RSF

SUITE 303
(AVAILABLE 12/1/21)

9,691 RSF

SUITE 401
(DIVISIBLE TO 2,260 RSF)

797 RSF

SUITE 403 MOVE-IN READY

2,446 RSF

SUITE 505 AVAILABLE 2/1/22



KIDDER.COM

This information supplied herein is from sources we deem reliable. It is provided without any representation, warranty, or guarantee, expressed or implied as to its accuracy. Prospective Buyer or Tenant should conduct an independent investigation and verification of all matters deemed to be material, including, but not limited to, statements of income and expenses. Consult your attorney, accountant, or other professional advisor.

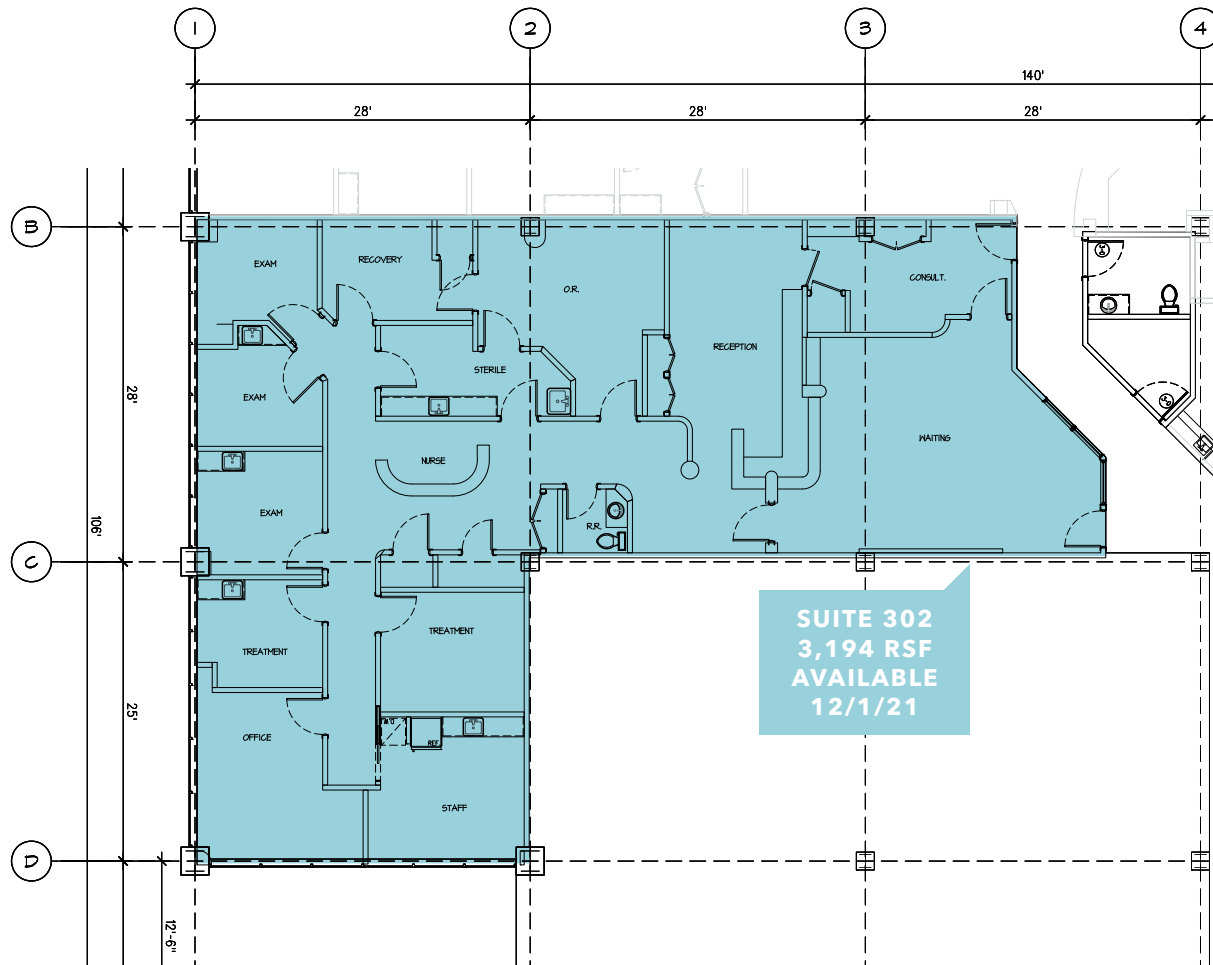
km Kidder Mathews

FOR LEASE

Three Tree Medical Arts Building

16259 SYLVESTER ROAD SW, BURIEN, WA

Suite 302 Floor Plan



3,194 RSF

SUITE 302

12/1/21

AVAILABLE

BRIAN CLAPP

206.248.7316

brian.clapp@kidder.com

KEITH HONSBERGER

425.450.1107

keith.honsberger@kidder.com

SPENCER CLAPP

206.248.7427

spencer.clapp@kidder.com

KIDDER.COM

This information supplied herein is from sources we deem reliable. It is provided without any representation, warranty, or guarantee, expressed or implied as to its accuracy. Prospective Buyer or Tenant should conduct an independent investigation and verification of all matters deemed to be material, including, but not limited to, statements of income and expenses. Consult your attorney, accountant, or other professional advisor.

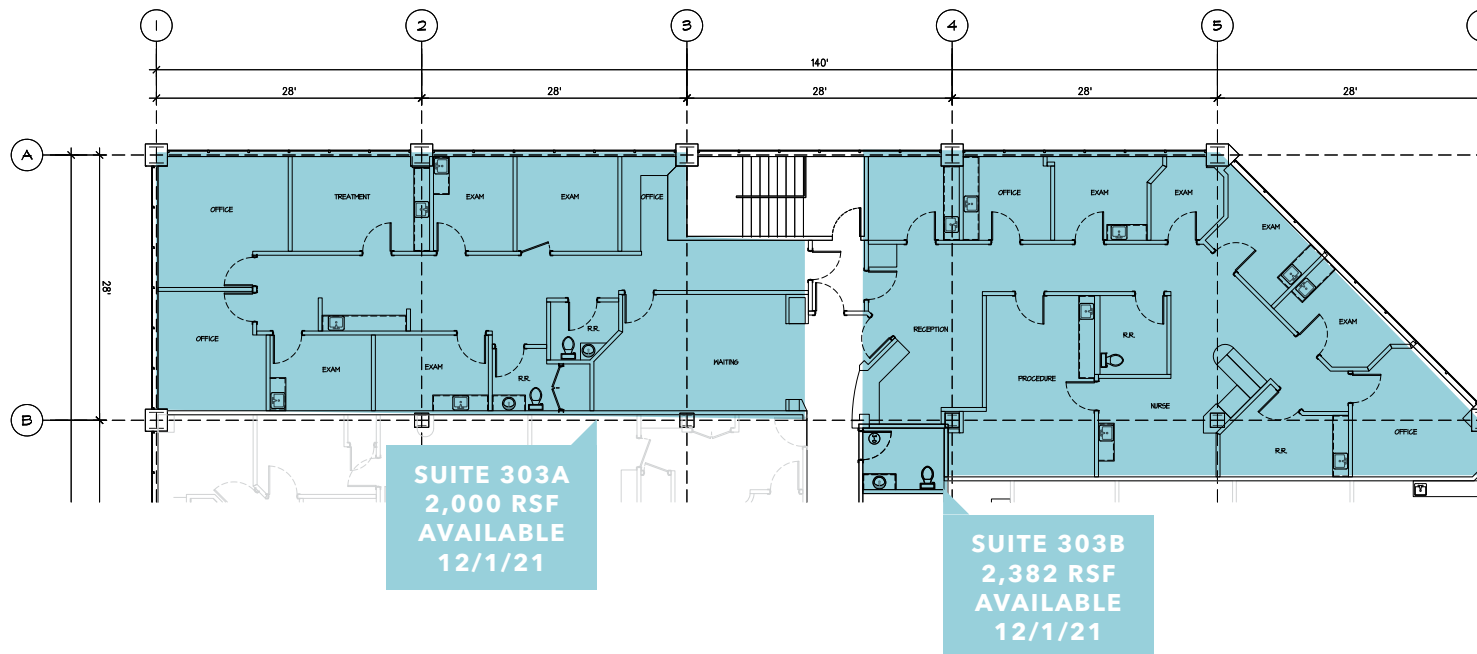
km Kidder Mathews

FOR LEASE

Three Tree Medical Arts Building

16259 SYLVESTER ROAD SW, BURIEN, WA

Suite 303 Floor Plan



4,382 RSF

SUITE 303A & 303B

2,000 RSF

SUITE 303A

2,382 RSF

SUITE 303B

12/1/21

AVAILABLE

BRIAN CLAPP

206.248.7316

brian.clapp@kidder.com

KEITH HONSBERGER

425.450.1107

keith.honsberger@kidder.com

SPENCER CLAPP

206.248.7427

spencer.clapp@kidder.com

KIDDER.COM

This information supplied herein is from sources we deem reliable. It is provided without any representation, warranty, or guarantee, expressed or implied as to its accuracy. Prospective Buyer or Tenant should conduct an independent investigation and verification of all matters deemed to be material, including, but not limited to, statements of income and expenses. Consult your attorney, accountant, or other professional advisor.

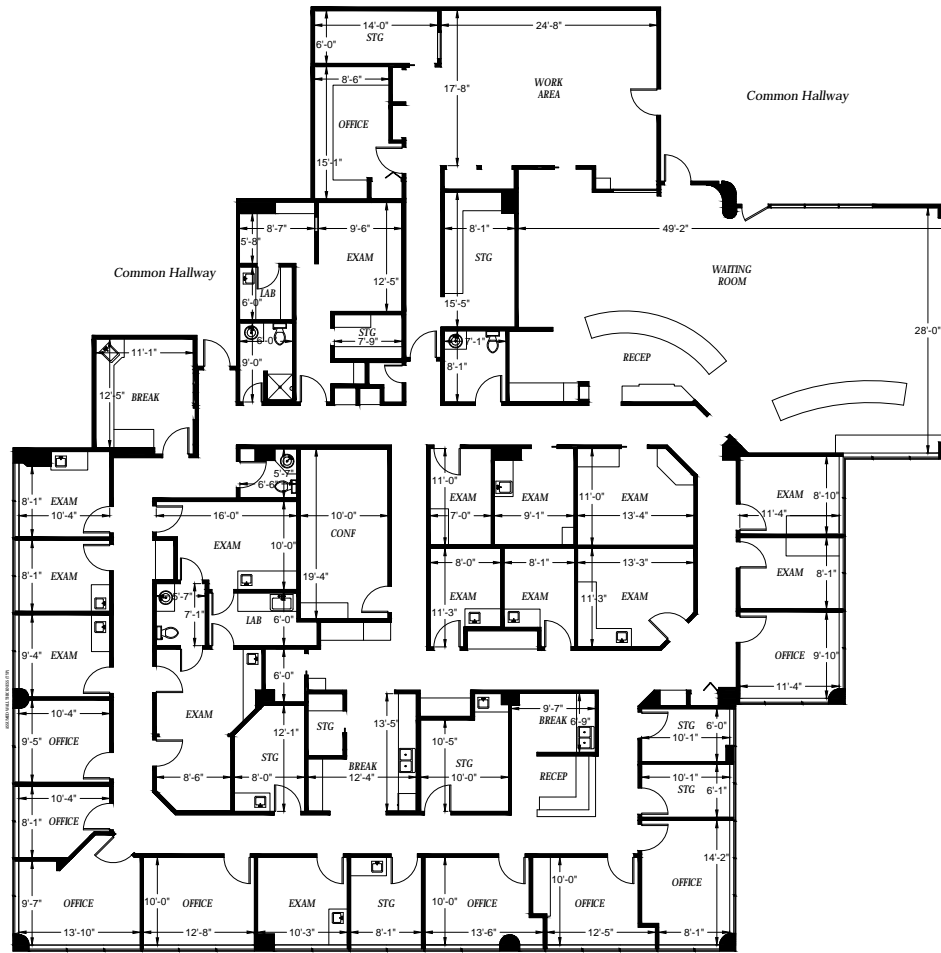
km Kidder Mathews

FOR LEASE

Three Tree Medical Arts Building

16259 SYLVESTER ROAD SW, BURIEN, WA

Suite 401 Floor Plan



9,691 RSF

AVAILABLE

2,260 RSF

DIVISIBLE TO

BRIAN CLAPP

206.248.7316

brian.clapp@kidder.com

KEITH HONSBERGER

425.450.1107

keith.honsberger@kidder.com

SPENCER CLAPP

206.248.7427

spencer.clapp@kidder.com

KIDDER.COM

This information supplied herein is from sources we deem reliable. It is provided without any representation, warranty, or guarantee, expressed or implied as to its accuracy. Prospective Buyer or Tenant should conduct an independent investigation and verification of all matters deemed to be material, including, but not limited to, statements of income and expenses. Consult your attorney, accountant, or other professional advisor.

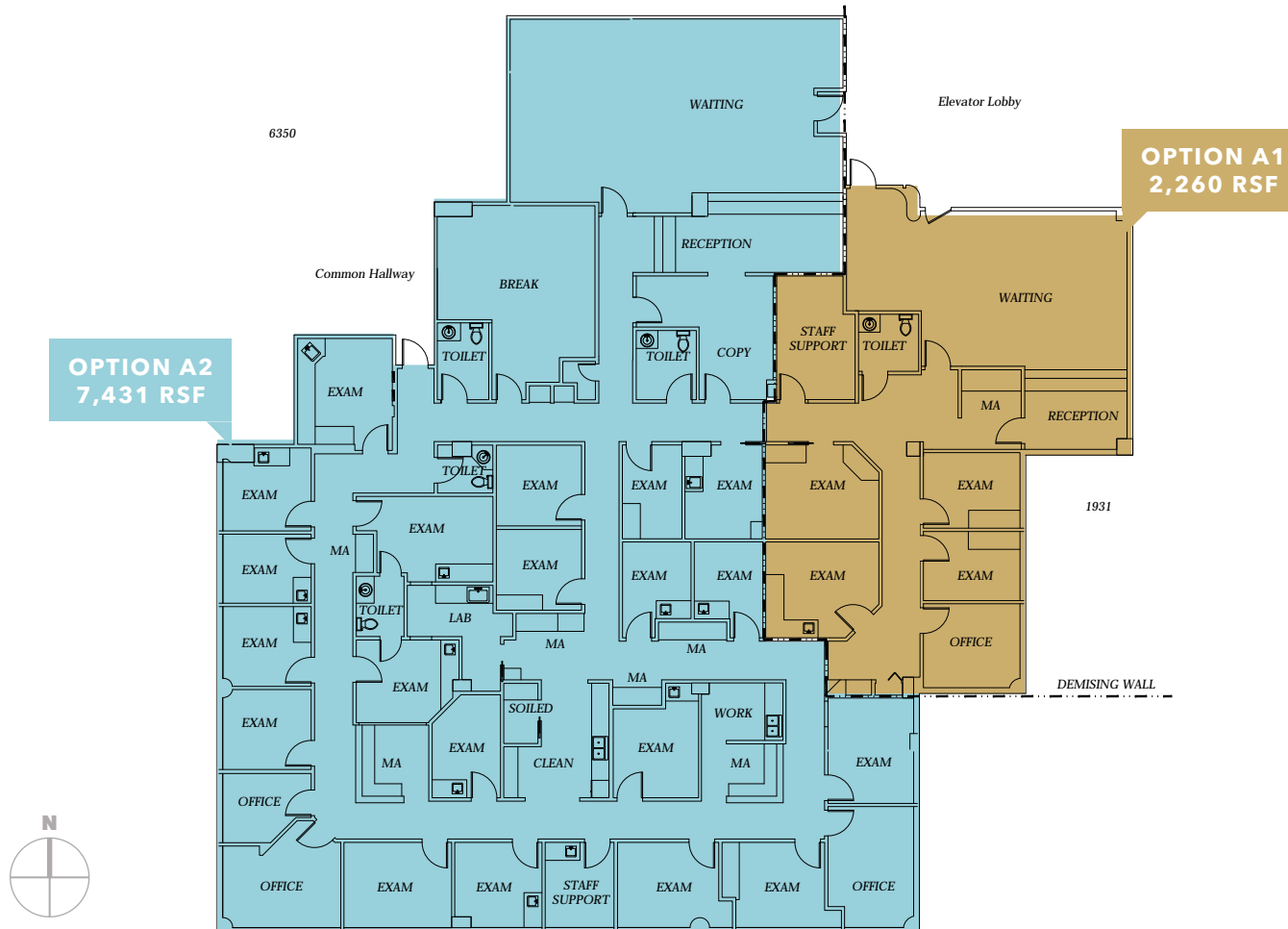


FOR LEASE

Three Tree Medical Arts Building

16259 SYLVESTER ROAD SW, BURIEN, WA

Suite 401 Options



2,260 RSF

OPTION A1

7,431 RSF

OPTION A2

OPTION A1
2,260 RSF

OPTION A2
7,431 RSF

BRIAN CLAPP

206.248.7316

brian.clapp@kidder.com

KEITH HONSBERGER

425.450.1107

keith.honsberger@kidder.com

SPENCER CLAPP

206.248.7427

spencer.clapp@kidder.com

KIDDER.COM

This information supplied herein is from sources we deem reliable. It is provided without any representation, warranty, or guarantee, expressed or implied as to its accuracy. Prospective Buyer or Tenant should conduct an independent investigation and verification of all matters deemed to be material, including, but not limited to, statements of income and expenses. Consult your attorney, accountant, or other professional advisor.

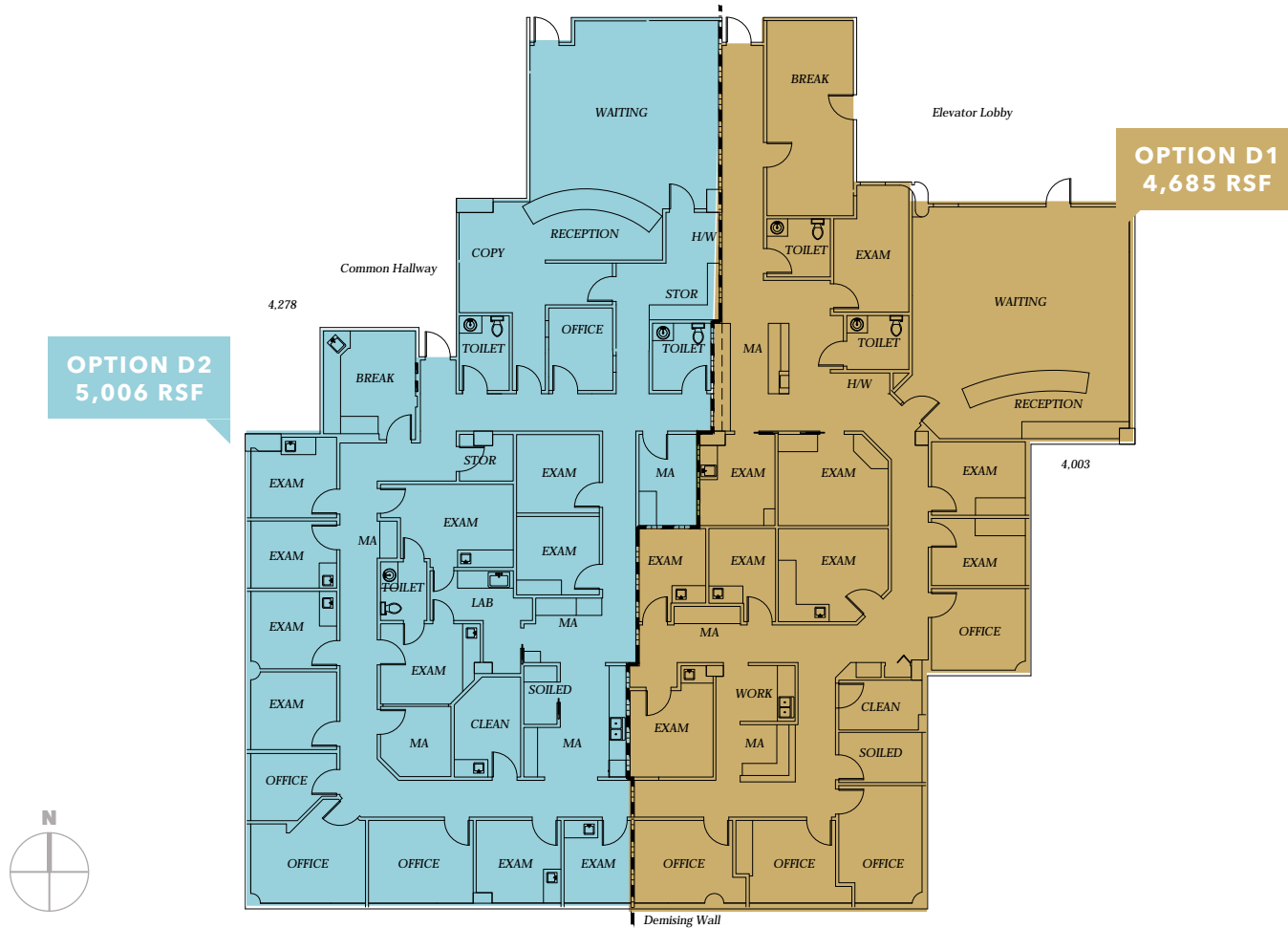
km Kidder Mathews

FOR LEASE

Three Tree Medical Arts Building

16259 SYLVESTER ROAD SW, BURIEN, WA

Suite 401 Options



4,685 RSF

OPTION D1

5,006 RSF

OPTION D2

BRIAN CLAPP
206.248.7316
brian.clapp@kidder.com

KEITH HONSBERGER
425.450.1107
keith.honsberger@kidder.com

SPENCER CLAPP
206.248.7427
spencer.clapp@kidder.com

KIDDER.COM

This information supplied herein is from sources we deem reliable. It is provided without any representation, warranty, or guarantee, expressed or implied as to its accuracy. Prospective Buyer or Tenant should conduct an independent investigation and verification of all matters deemed to be material, including, but not limited to, statements of income and expenses. Consult your attorney, accountant, or other professional advisor.

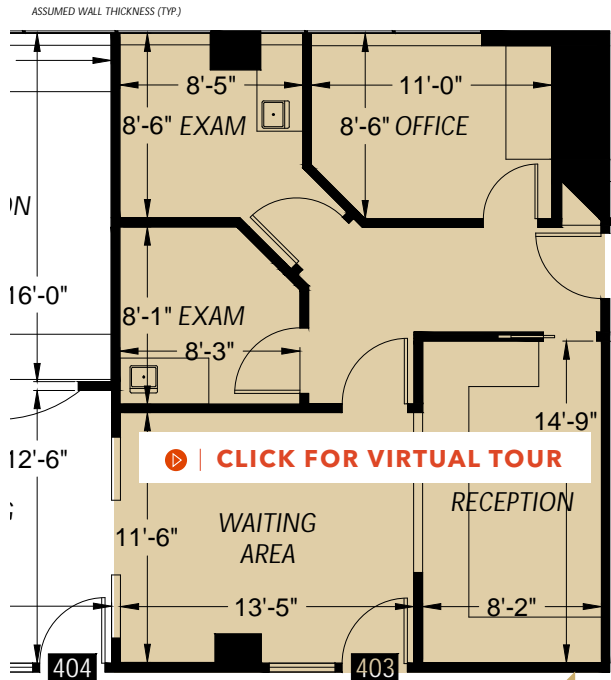
km Kidder Mathews

FOR LEASE

Three Tree Medical Arts Building

16259 SYLVESTER ROAD SW, BURIEN, WA

Suite 403 Floor Plan | Move-in-Ready



**SUITE 403
797 RSF
AVAILABLE**



797 RSF

SUITE 403

MOVE-IN-READY

BRIAN CLAPP

206.248.7316

brian.clapp@kidder.com

KEITH HONSBERGER

425.450.1107

keith.honsberger@kidder.com

SPENCER CLAPP

206.248.7427

spencer.clapp@kidder.com

KIDDER.COM

This information supplied herein is from sources we deem reliable. It is provided without any representation, warranty, or guarantee, expressed or implied as to its accuracy. Prospective Buyer or Tenant should conduct an independent investigation and verification of all matters deemed to be material, including, but not limited to, statements of income and expenses. Consult your attorney, accountant, or other professional advisor.

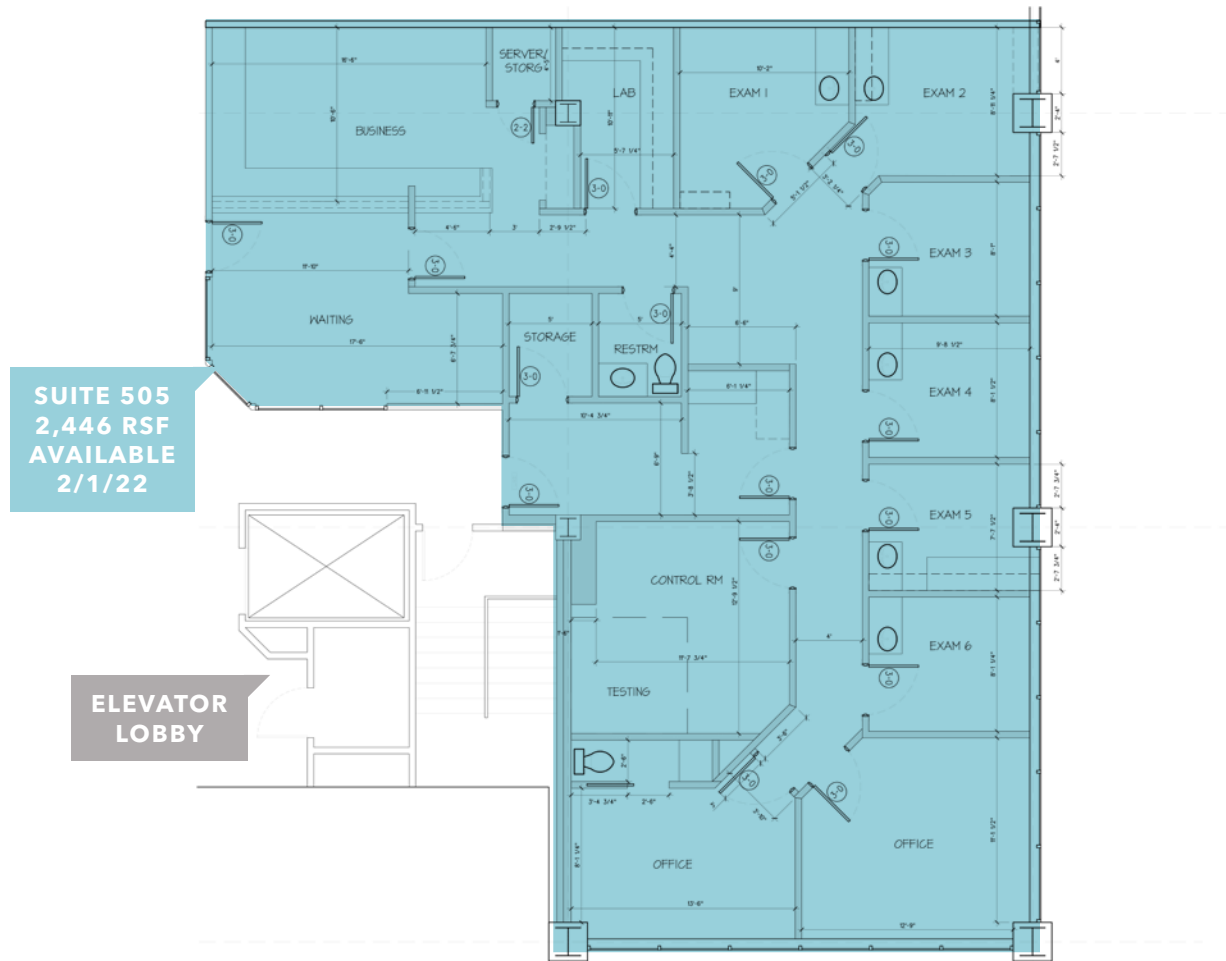
km Kidder Mathews

FOR LEASE

Three Tree Medical Arts Building

16259 SYLVESTER ROAD SW, BURIEN, WA

Suite 505 Floor Plan | Available 2/1/22



2,446 RSF

AVAILABLE

2/1/22

AVAILABLE

BRIAN CLAPP

206.248.7316

brian.clapp@kidder.com

KEITH HONSBERGER

425.450.1107

keith.honsberger@kidder.com

SPENCER CLAPP

206.248.7427

spencer.clapp@kidder.com

KIDDER.COM

This information supplied herein is from sources we deem reliable. It is provided without any representation, warranty, or guarantee, expressed or implied as to its accuracy. Prospective Buyer or Tenant should conduct an independent investigation and verification of all matters deemed to be material, including, but not limited to, statements of income and expenses. Consult your attorney, accountant, or other professional advisor.

