

Retail Space For Lease

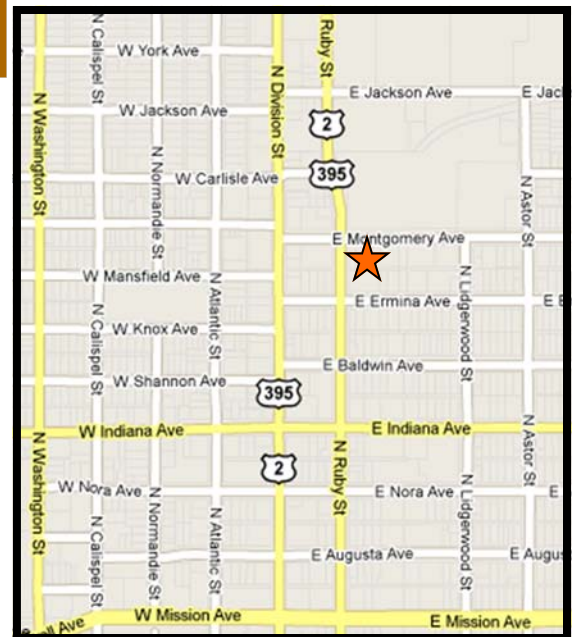


Ruby Retail Center

Property Information

8000 SF Building

- Located on the SE corner of Ruby & Montgomery
- Excellent exposure on the going home side of the couplet
- Vanilla Shell build out included
- Zoning: GC-70 Land Use Plan : Commercial
- 27,000 + cars per day on Ruby
- Parking: 3.5 + parking stalls per 1000 SF



Suite "C" (1340 S.F.) \$1,955.00 / mo. NNN



For Information Call

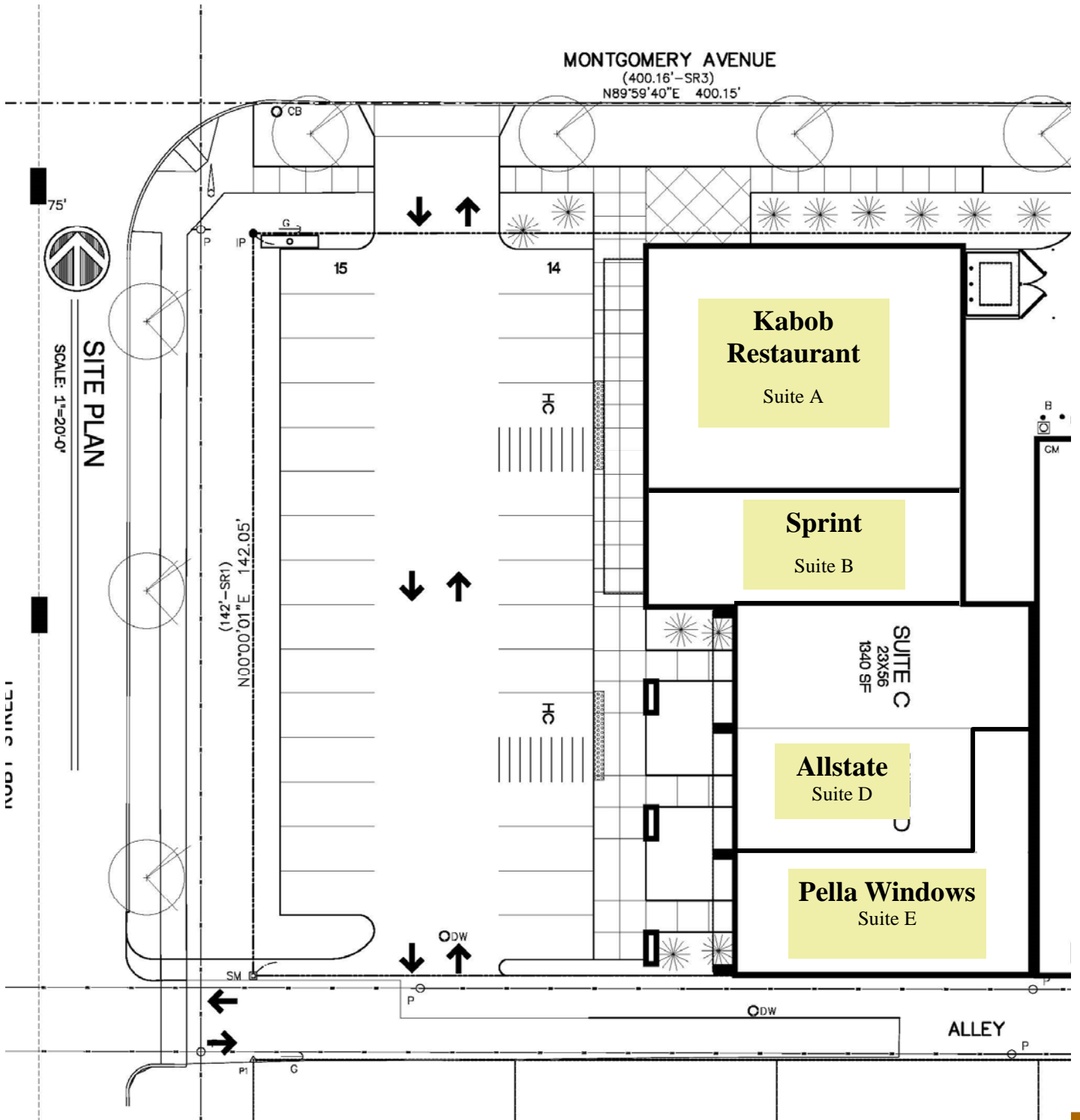
Mike Schmitz

509 462-9313 wk

509 979-0622 cell

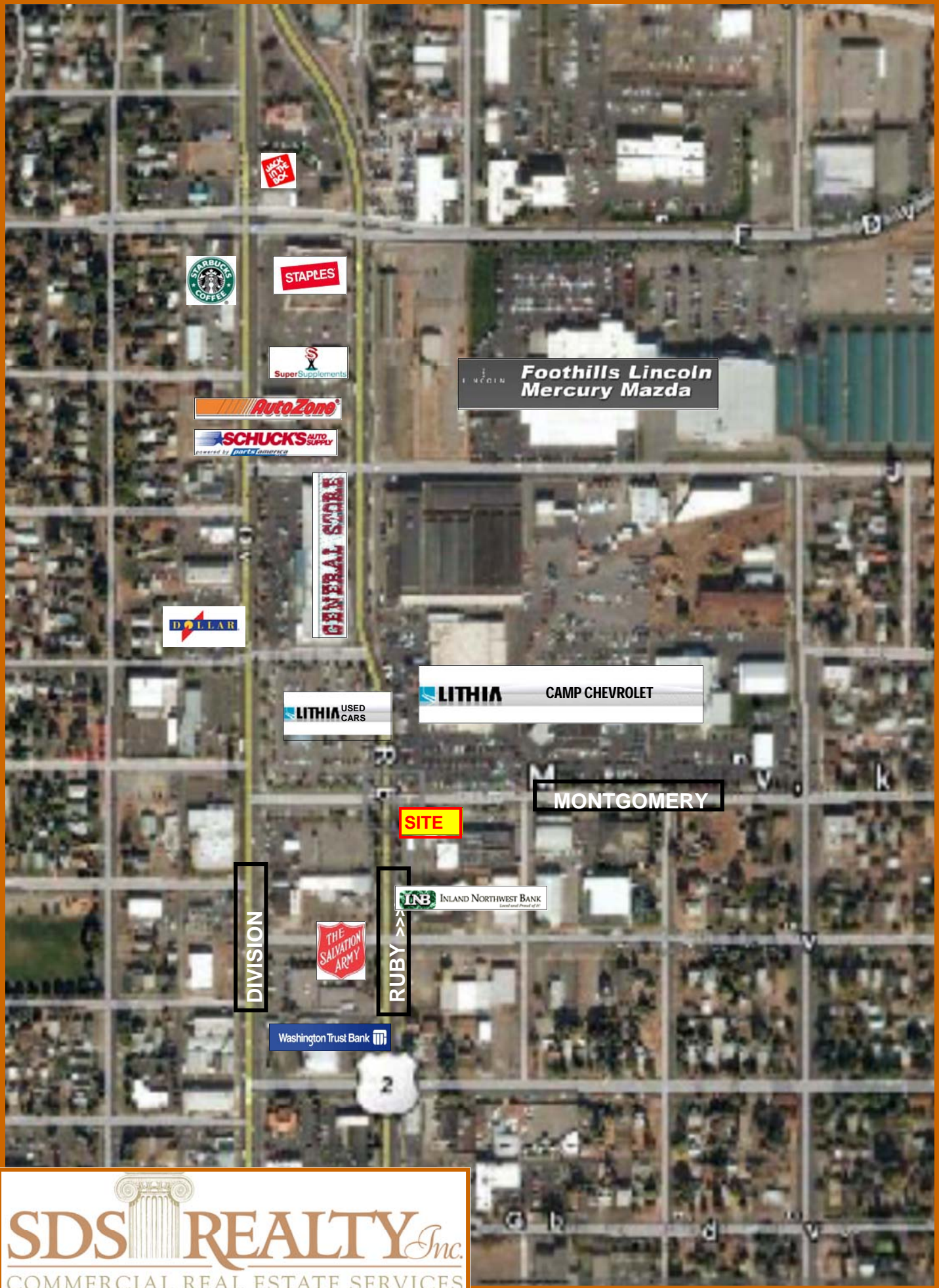
Mike@sdsrealty.com

Site Plan



For Information Call
Mike Schmitz
 509 462-9313 wk
 509 979-0622 cell

This information has been secured from sources we believe to be reliable, but we make no representations or warranties, express or implied, as to the accuracy of the information. References to square footage or age are approximate. Buyer/tenant must verify the information and bears all risks for any inaccuracies.



**Foothills Lincoln
Mercury Mazda**



LITHIA CAMP CHEVROLET



MONTGOMERY

SITE

DIVISION

RUBY

