

sds

COMMERCIAL

The South Landing Building

Downtown University District

Office / Retail Building for Lease

429 E Sprague
Spokane, WA

Highlights:

- 3000 SF Office / Retail
- Located on the NW corner of Sprague & Sherman (signalized intersection)
- Excellent Exposure on the south end of the university Gateway Bridge
- Riverpoint Campus, Medical School, Gonzaga University, Catalyst Building
- Exposed brick, upgraded finishes, modern design
- Zoning: DTU
- Lease Rate: \$4500.00 / mo.

Mike Schmitz
W: 509-462-9313
C: 509-979-0622
mike@sdsrealty.com

www.sdsrealty.com

SDS REALTY INC 108 N WASHINGTON #600, SPOKANE WA. 99201

This information has been secured from sources we believe to be reliable, but we make no representations or warranties, express or implied, as to the accuracy of the information. References to square footage or age are approximate. Buyer/tenant must verify the information and bears all risks for any inaccuracies.

Office / Retail Building for Lease

Mike Schmitz:
W: 509.714.2593
C: 509.979.0622
mike@sdsrealty.com



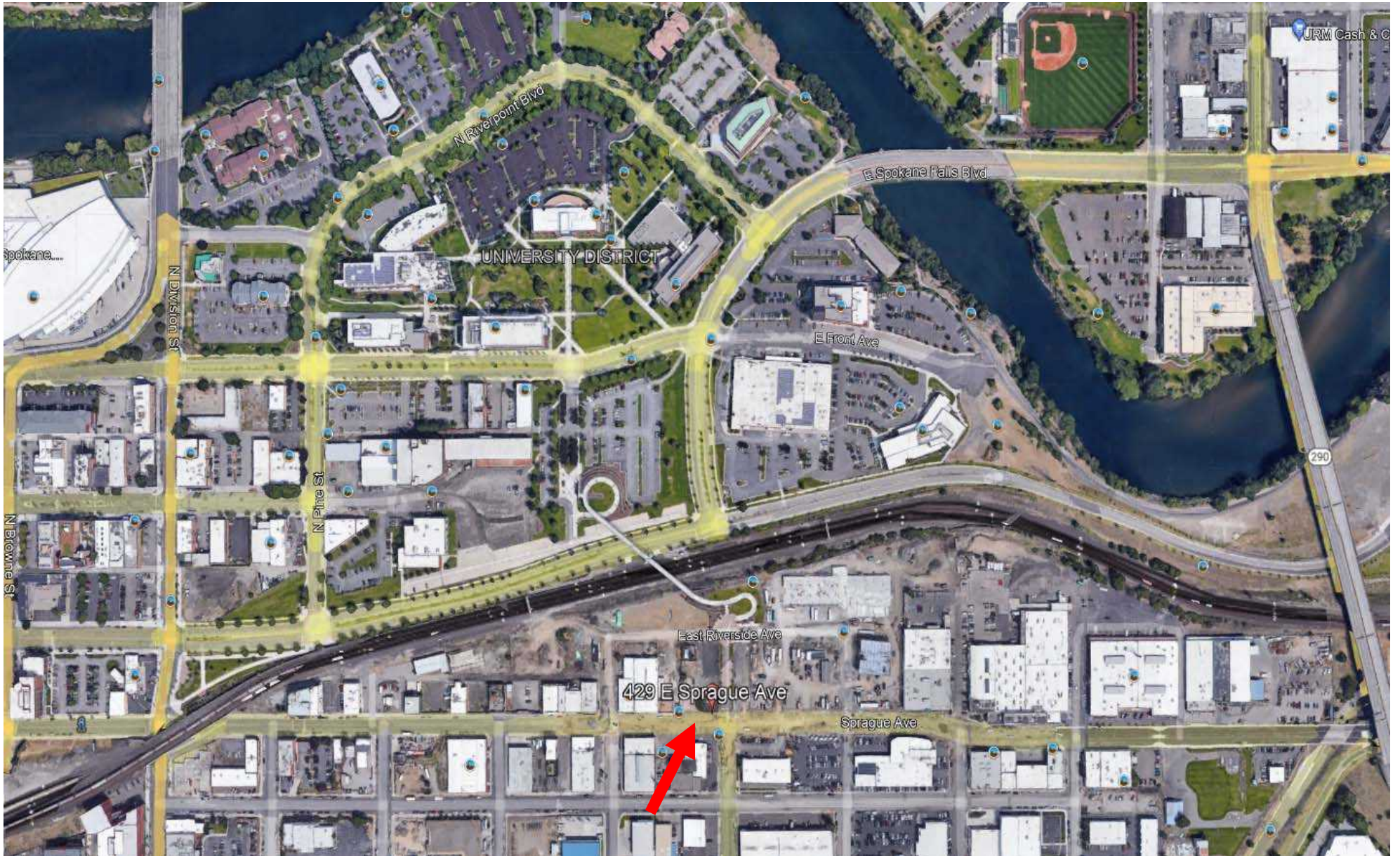
www.sdsrealty.com

SDS REALTY INC 108 N WASHINGTON #600. SPOKANE WA. 99201

This information has been secured from sources we believe to be reliable, but we make no representations or warranties, express or implied, as to the accuracy of the information. References to square footage or age are approximate. Buyer/tenant must verify the information and bears all risks for any inaccuracies.

Office / Retail Building for Lease

Mike Schmitz:
W: 509.714.2593
C: 509.979.0622
mike@sdsrealty.com



www.sdsrealty.com

SDS REALTY INC 108 N WASHINGTON #600. SPOKANE WA. 99201

This information has been secured from sources we believe to be reliable, but we make no representations or warranties, express or implied, as to the accuracy of the information. References to square footage or age are approximate. Buyer/tenant must verify the information and bears all risks for any inaccuracies.