



FOR LEASE
 Providence Health & Services
 Medical Center Building
 820 S. McClellan Street
 Spokane, WA 99204



ALL LEASES ARE FULL SERVICE

**LOCATED ON THE PROVIDENCE
 SACRED HEART CAMPUS**

SPOKANE'S LARGEST

AVAILABLE SPACE

SUITE	RSF	RENT
414	791	\$22.00/RSF

PROPERTY INFORMATION

- Adjacent Parking available for Doctors, Staff, and Patients
- Located on the Providence Sacred Heart Campus
- Tenant Improvement Allowances available

**For more information about this property,
 please visit:**
www.khmedicaloffice.com

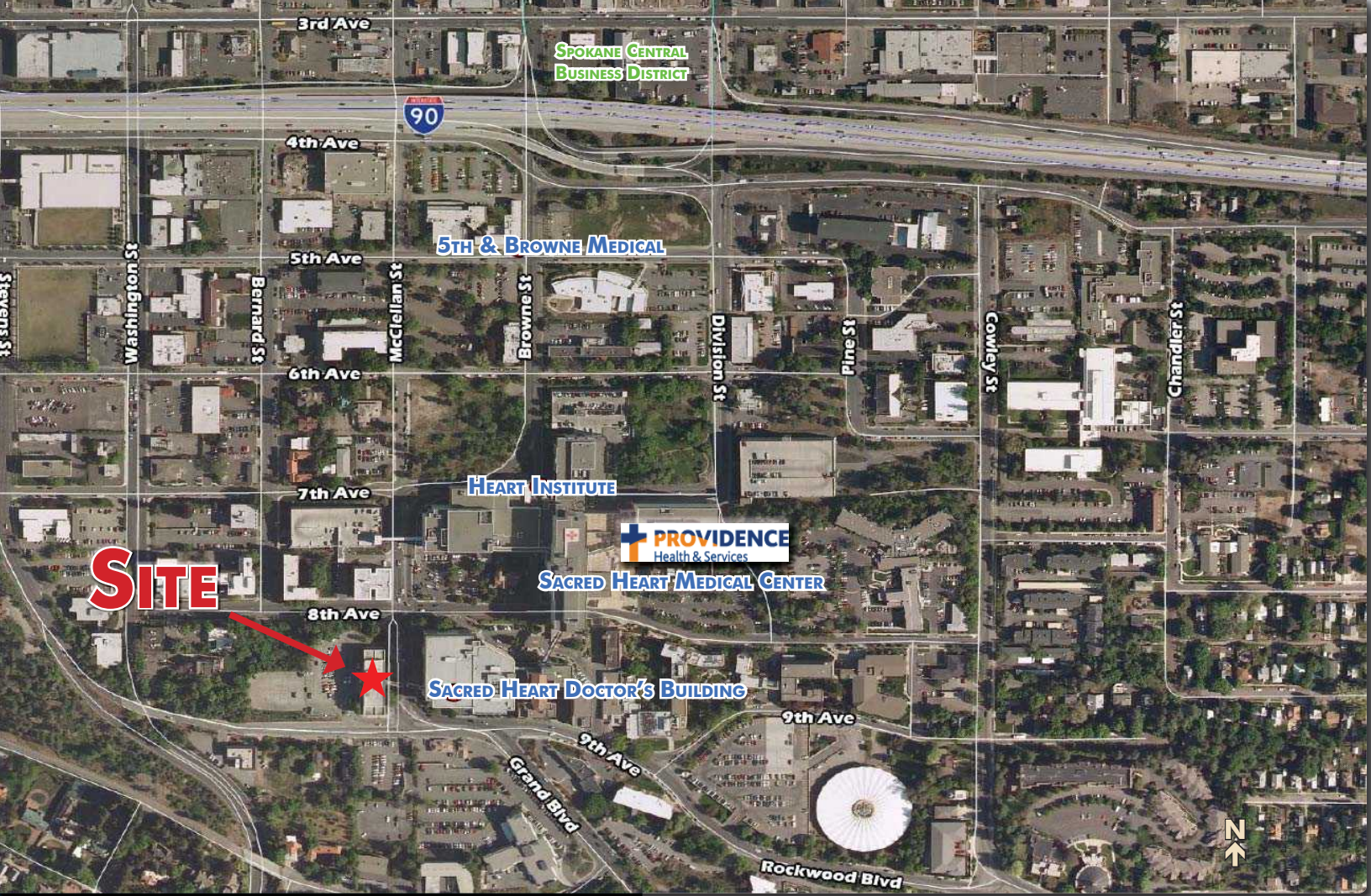


Mann Jones
 509.755.7526 or mann.jones@khco.com

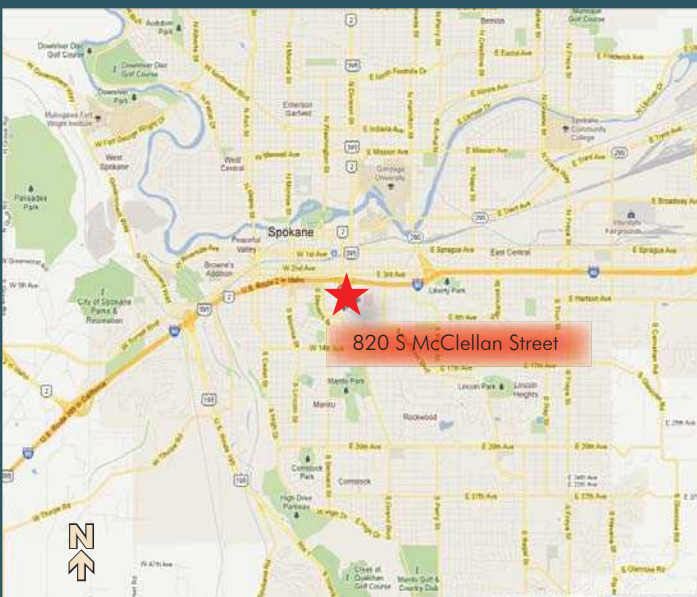
Ron Horton, Senior Property Manager/Leasing Agent
 509.755.7551 or ron.horton@khco.com



No warranty or representation, expressed or implied, is made by Kiemle & Hagood Company, its agents or its employees as to the accuracy of the information contained herein. All information furnished is from sources deemed reliable and submitted subject to errors, omissions, change of terms and conditions, prior sale, lease or financing, or withdrawal without notice. No one should rely solely on the above information, but instead should conduct their own investigation to independently satisfy themselves.



AERIAL VIEWS & MAP



Mann Jones
509.755.7526 or mann.jones@khco.com

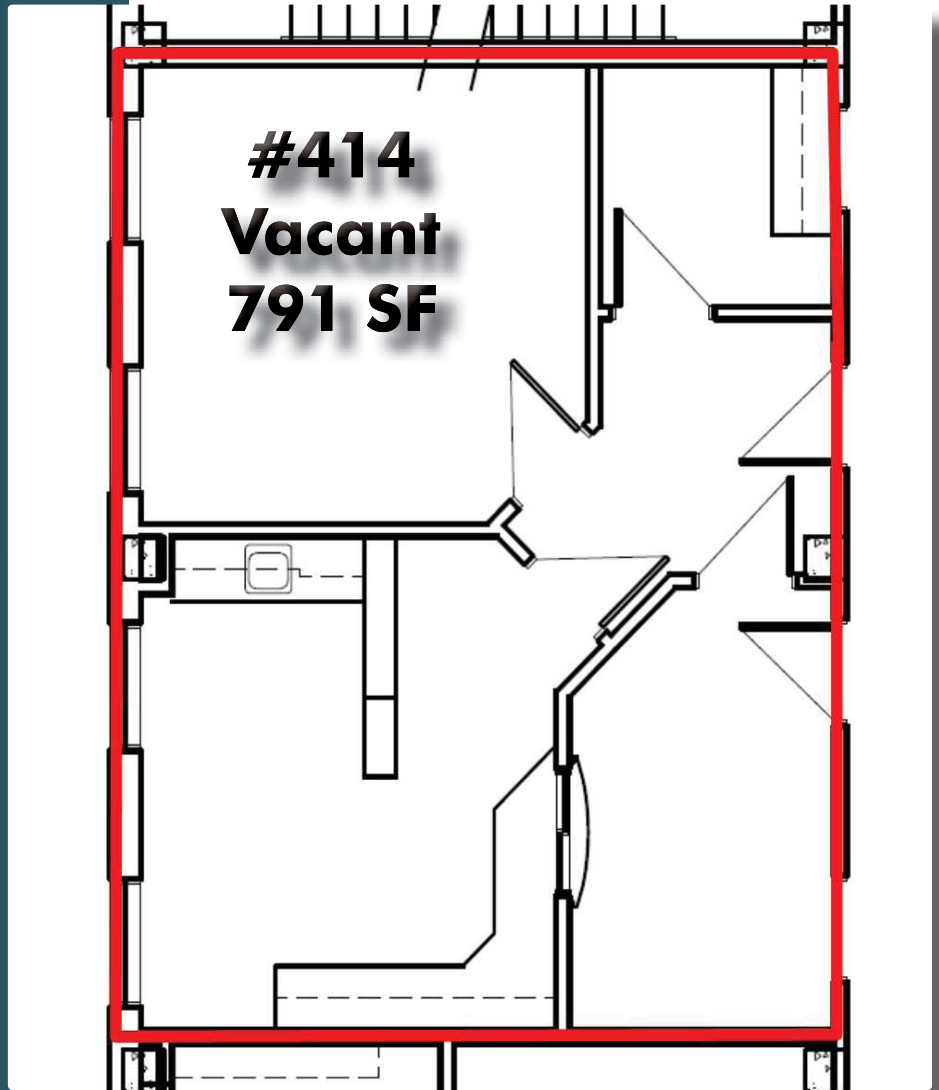
Ron Horton, Senior Property Manager/Leasing Agent
509.755.7551 or ron.horton@khco.com

**KIEMLE &
HAGOOD
COMPANY**
509.838.6541
khco.com

No warranty or representation, expressed or implied, is made by Kiemle & Hagood Company, its agents or its employees as to the accuracy of the information contained herein. All information furnished is from sources deemed reliable and submitted subject to errors, omissions, change of terms and conditions, prior sale, lease or financing, or withdrawal without notice. No one should rely solely on the above information, but instead should conduct their own investigation to independently satisfy themselves.

FOR LEASE


Providence Health & Services
Medical Center Building
820 S. McClellan Street
Spokane, WA 99204



Mann Jones
509.755.7526 or mann.jones@khco.com

Ron Horton, Senior Property Manager/Leasing Agent
509.755.7551 or ron.horton@khco.com

**KIEMLE &
HAGOOD
COMPANY**

 509.838.6541

khco.com

No warranty or representation, expressed or implied, is made by Kiemle & Hagood Company, its agents or its employees as to the accuracy of the information contained herein. All information furnished is from sources deemed reliable and submitted subject to errors, omissions, change of terms and conditions, prior sale, lease or financing, or withdrawal without notice. No one should rely solely on the above information, but instead should conduct their own investigation to independently satisfy themselves.