



Office/Warehouse with Showroom

Levi McCormick

(509) 462-9306

levi@sdsrealty.com

www.sdsrealty.com

2805 N. Market Street Spokane, WA

(Parcel Records 3021 E. Grace Ave)

Located in the center of Spokane on the corner of Market Street and Grace Ave.

FOR SALE \$699,000

Owners will lease to a qualified Tenant

Vic Overholser

(509) 462-9310

vic@sdsrealty.com

www.sdsrealty.com



Office/Warehouse with Showroom

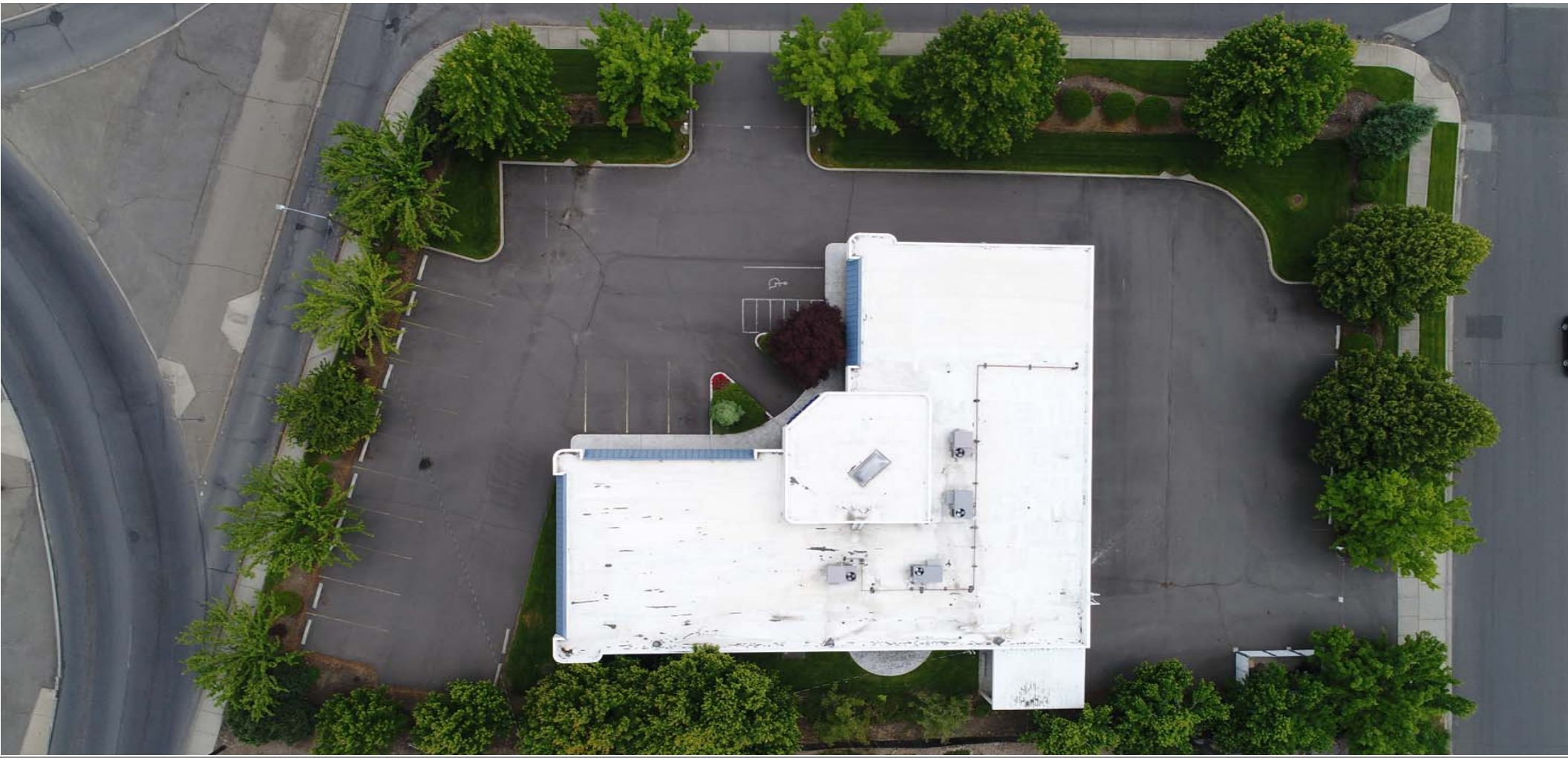
Levi McCormick
(509) 462-9306
levi@sdsrealty.com
www.sdsrealty.com

Parcel number: 35102.2005
Zoning: GC (Per the city of Spokane)
Year built: 1999
Lot size: 34,425 SF
Building Size: 7,500 SF

Ample onsite parking
Well constructed building
Good street visibility and signage
Able to expand building to the west
Nicely built out with large offices and conference room

Vic Overholser
(509) 462-9310
vic@sdsrealty.com
www.sdsrealty.com

This information has been secured from sources we believe to be reliable, but we make no representations or warranties, express or implied, as to the accuracy of the information. References to square footage or age are approximate. Buyer/tenant must verify the information and bears all risks for any inaccuracies.



Office/Warehouse with Showroom

Levi McCormick

(509) 462-9306

levi@sdsrealty.com

www.sdsrealty.com



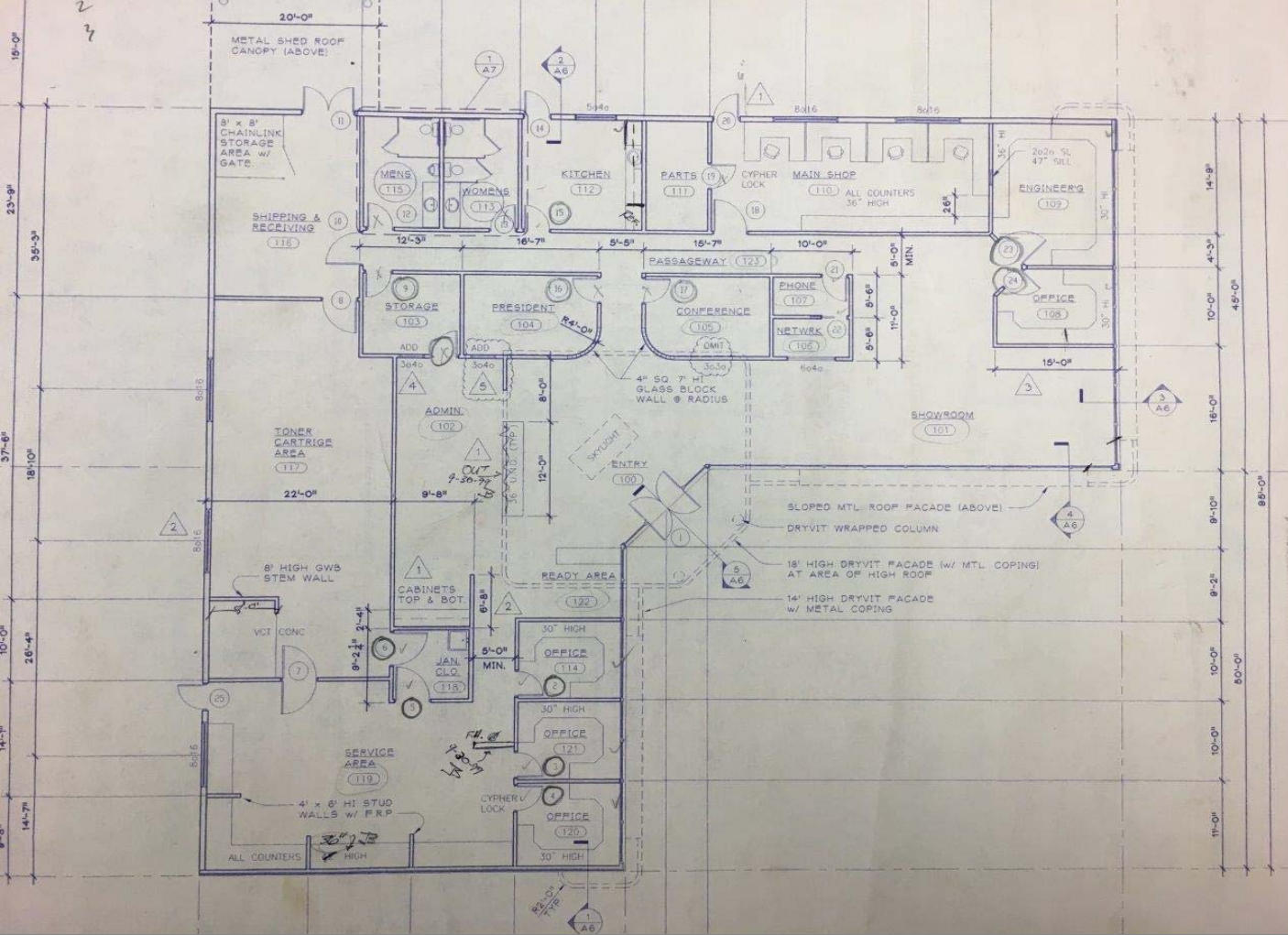
Vic Overholser

(509) 462-9310

vic@sdsrealty.com

www.sdsrealty.com

This information has been secured from sources we believe to be reliable, but we make no representations or warranties, express or implied, as to the accuracy of the information. References to square footage or age are approximate. Buyer/tenant must verify the information and bears all risks for any inaccuracies.



Office/Warehouse with Showroom

Levi McCormick

(509) 462-9306

levi@sdsrealty.com

www.sdsrealty.com



Vic Overholser

(509) 462-9310

vic@sdsrealty.com

www.sdsrealty.com

This information has been secured from sources we believe to be reliable, but we make no representations or warranties, express or implied, as to the accuracy of the information. References to square footage or age are approximate. Buyer/tenant must verify the information and bears all risks for any inaccuracies.